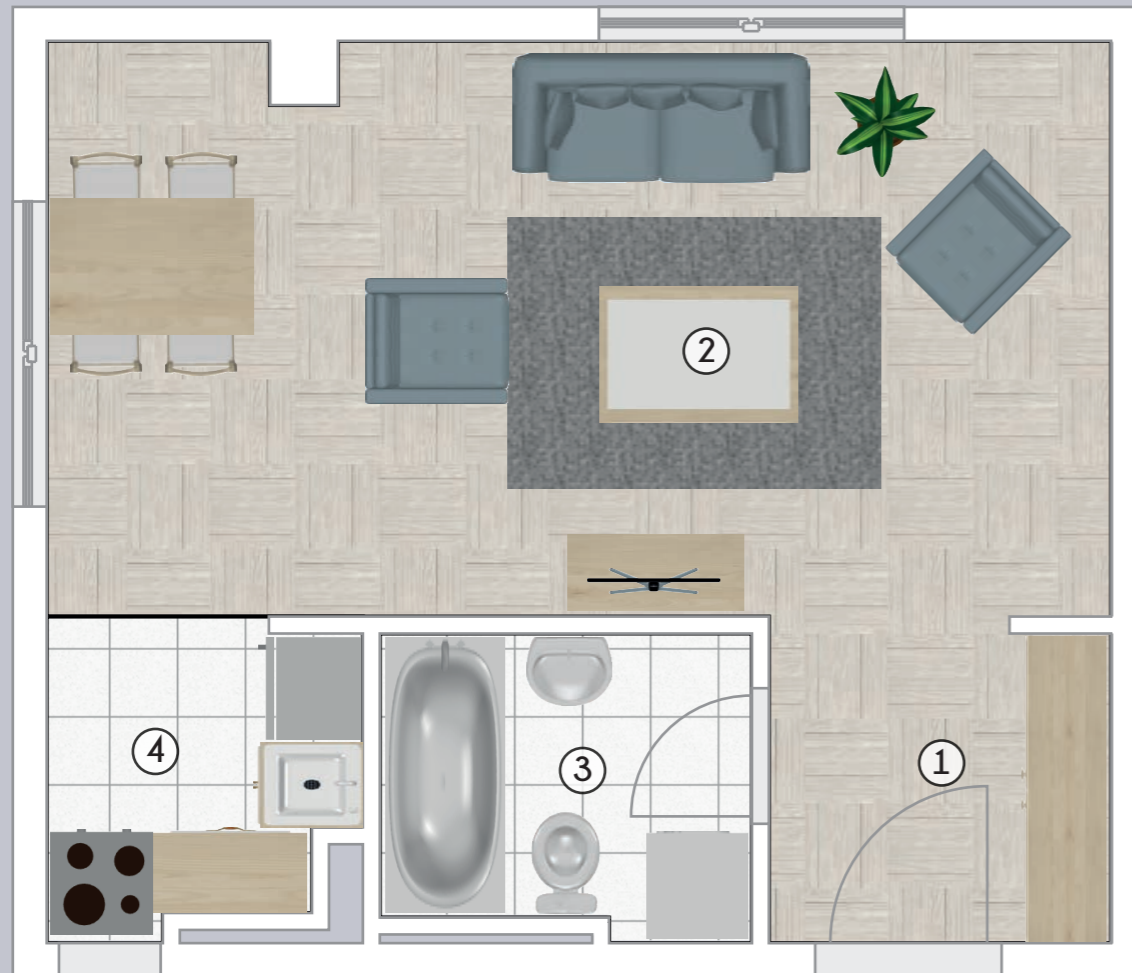


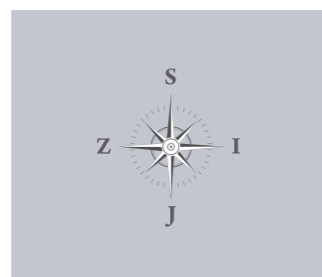


TEHNIČKI KATALOG STANOVA FAZA VI





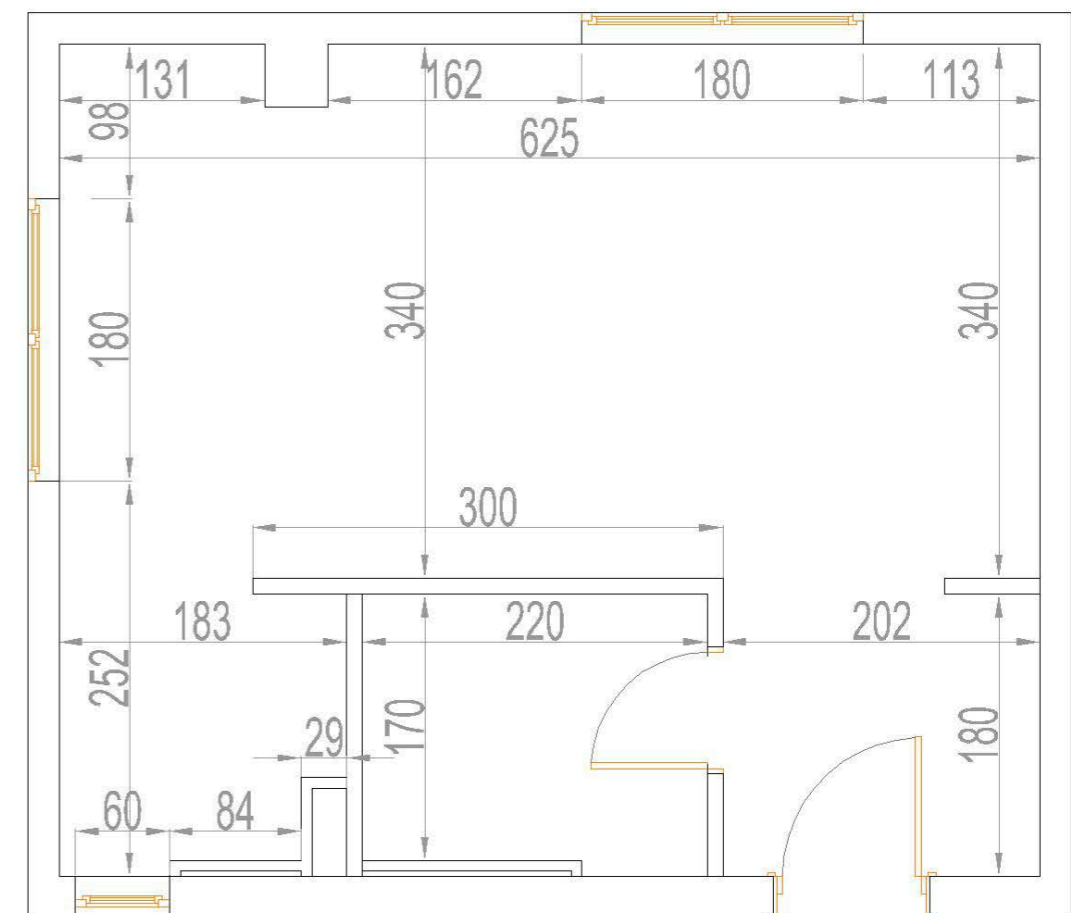
GARSONJERA KOJA SE NALAZI OD I DO VI SPRATA PL 1

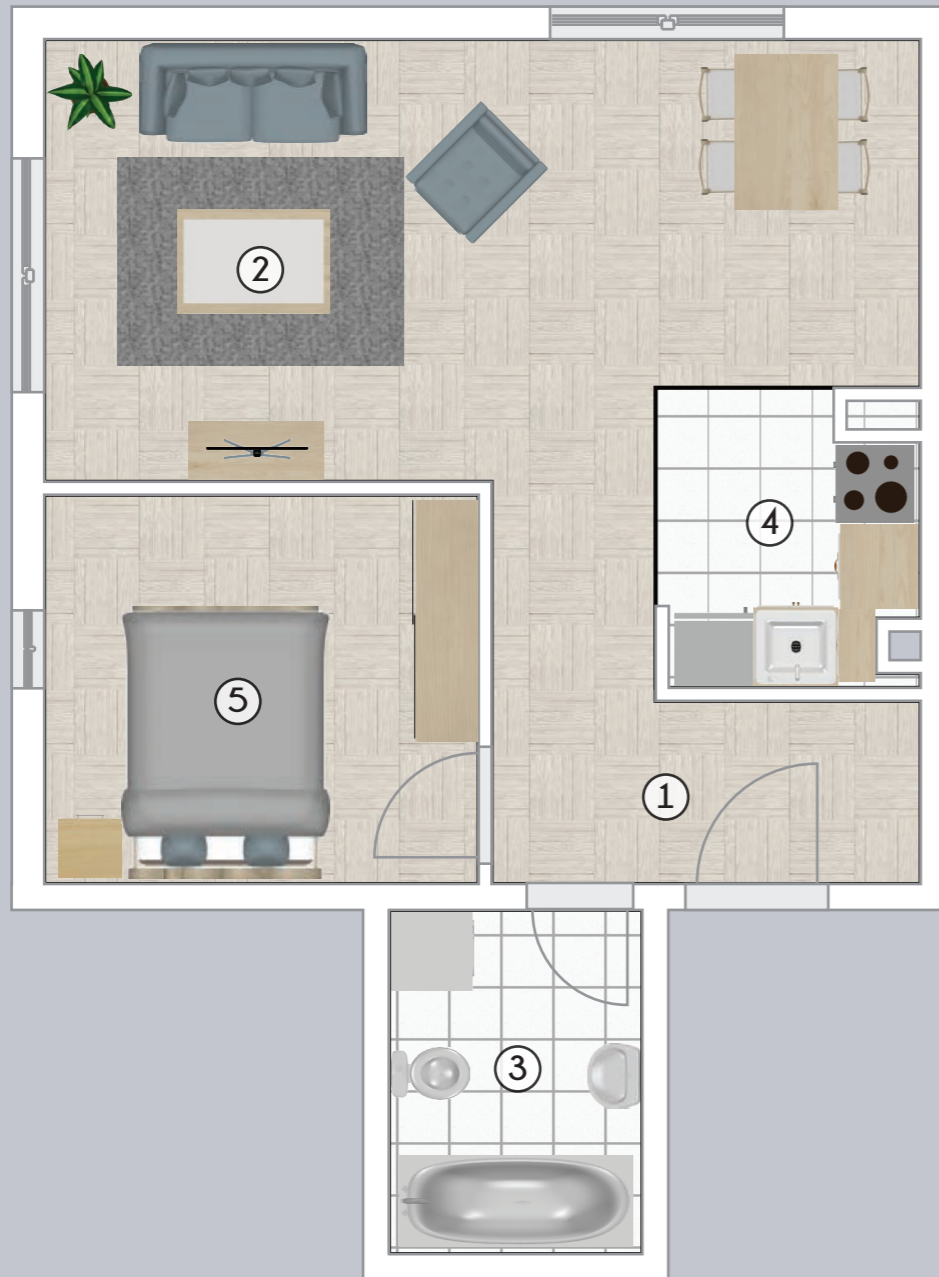


STRUKTURA

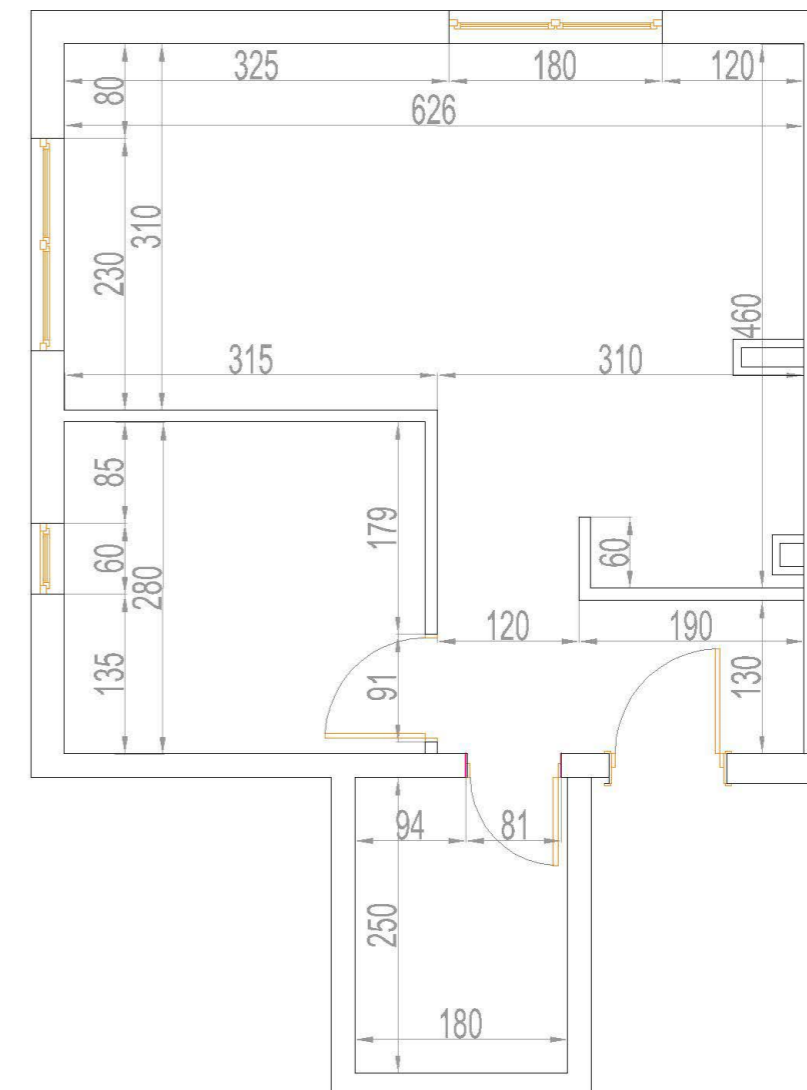
1. Hodnik	6,96 m ²
2. Kombinovana soba	21,03 m ²
3. Kupatio	3,82 m ²
4. Kuhinja	3,16 m ²

UKUPNO: 31,89 m²





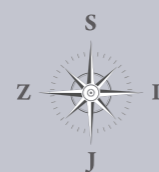
JEDNOISPOSOBAN STAN KOJI SE NALAZI U PRIZEMLJU PL 3

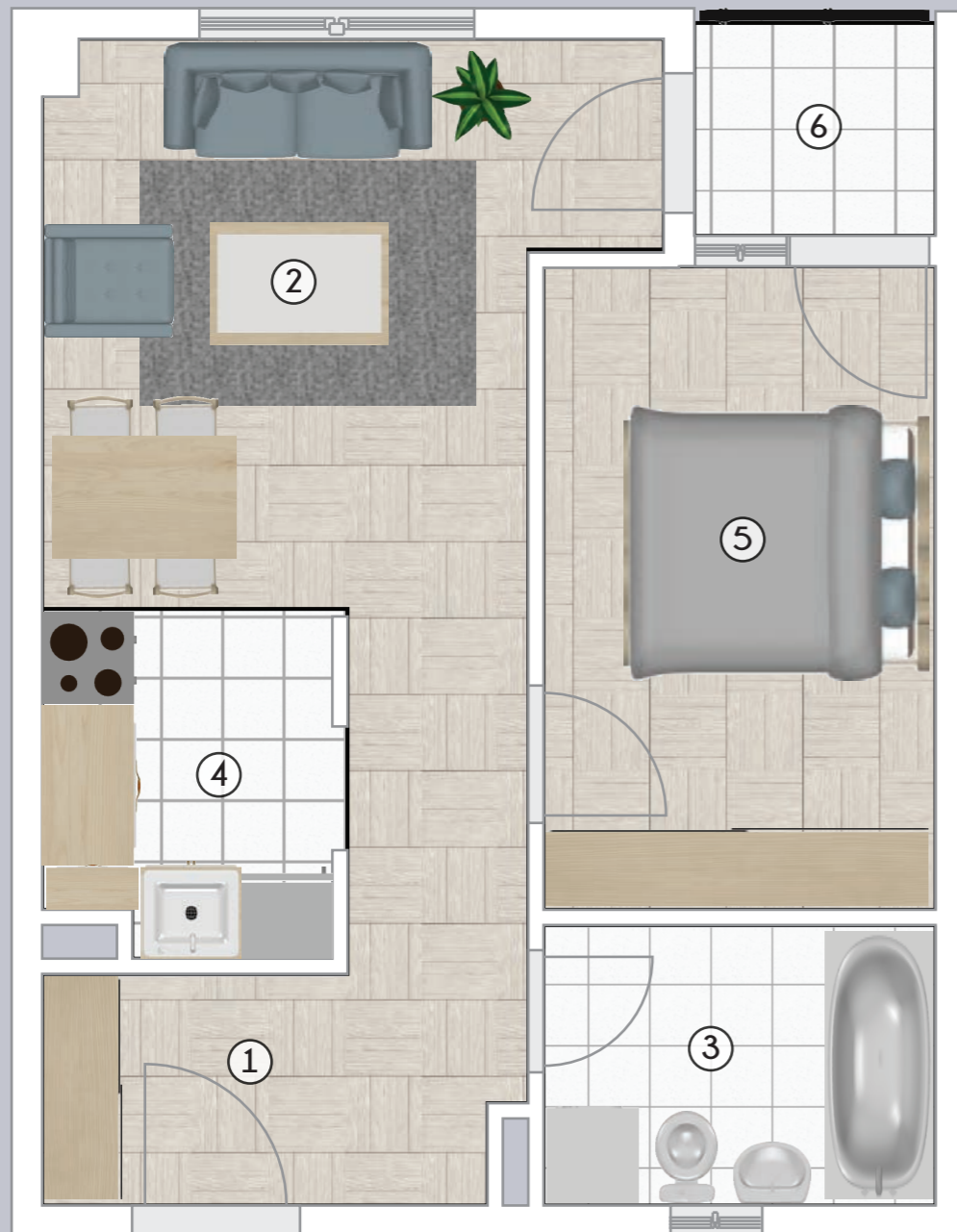


STRUKTURA

1. Hodnik	4,03 m ²
2. Kombinovana soba	20,31 m ²
3. Kupatio	4,32 m ²
4. Kuhinja	3,60 m ²
5. Soba	8,57 m ²

UKUPNO: 40,83 m²





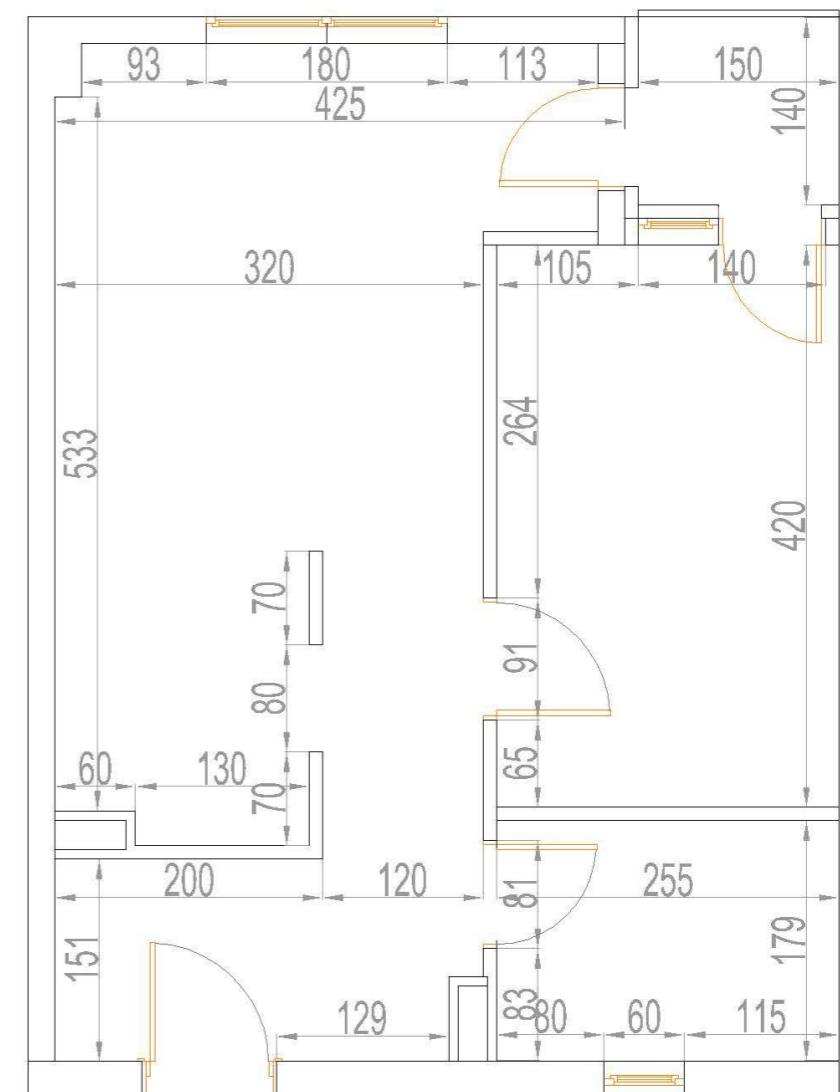
DVOSOBAN STAN KOJI SE NALAZI OD I DO VI SPRATA PL 1

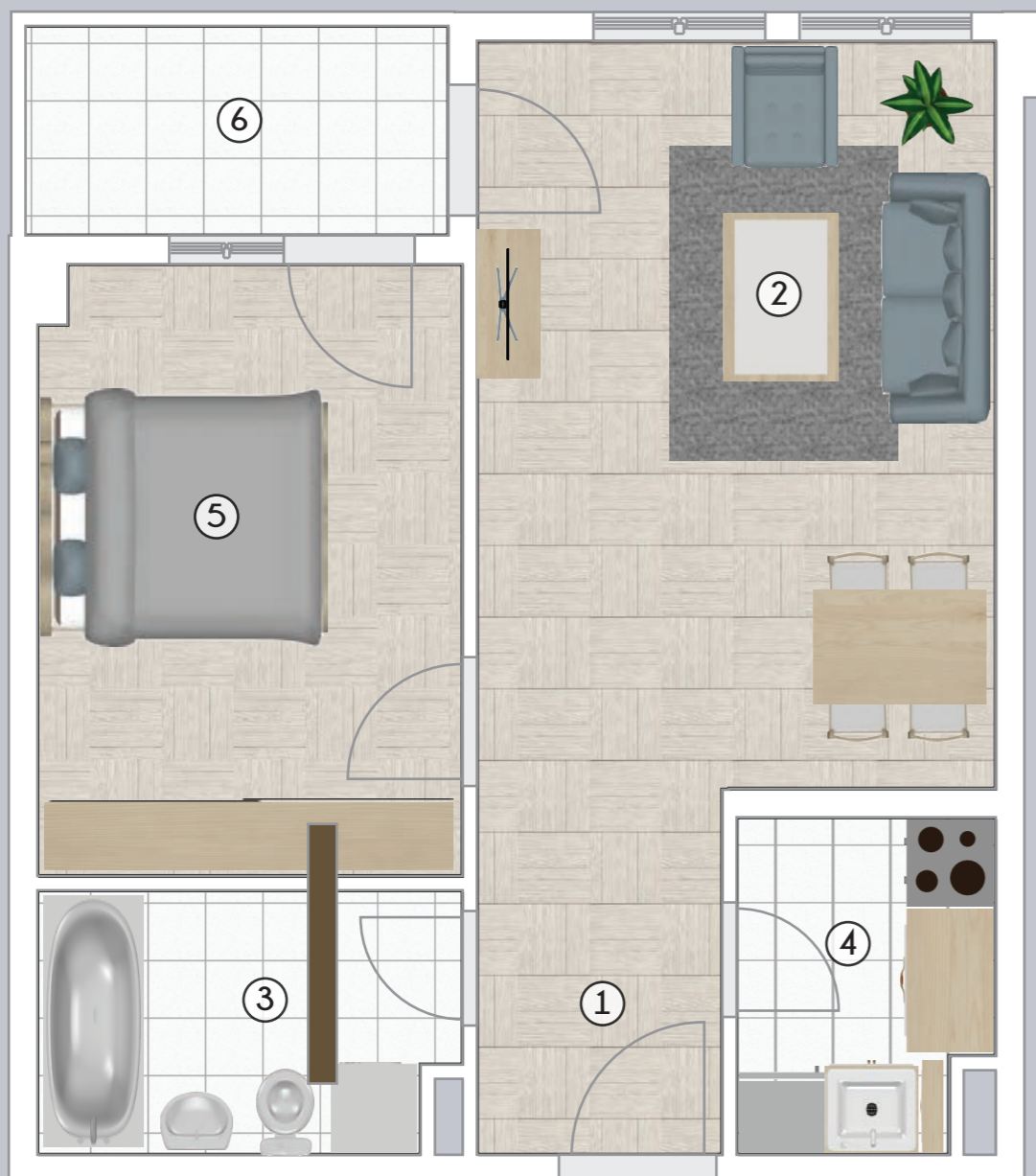


STRUKTURA

1. Hodnik	7,71 m ²
2. Kombinovana soba	13,01 m ²
3. Kupatio	4,60 m ²
4. Kuhinja	4,02 m ²
5. Soba	10,73 m ²
6. Terasa	2,18 m ²

UKUPNO: 42,25 m²





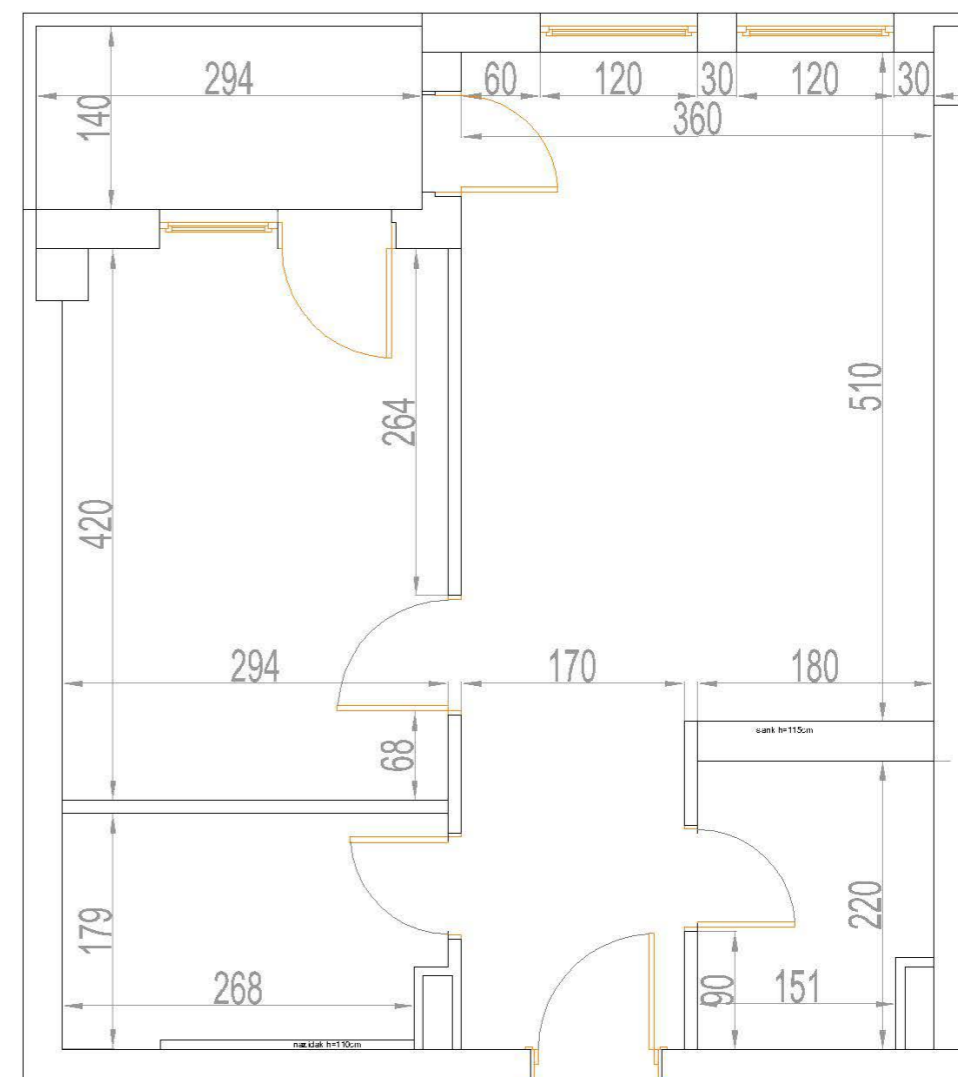
DVOSOBAN STAN KOJI SE NALAZI OD I DO VI SPRATA PL 1

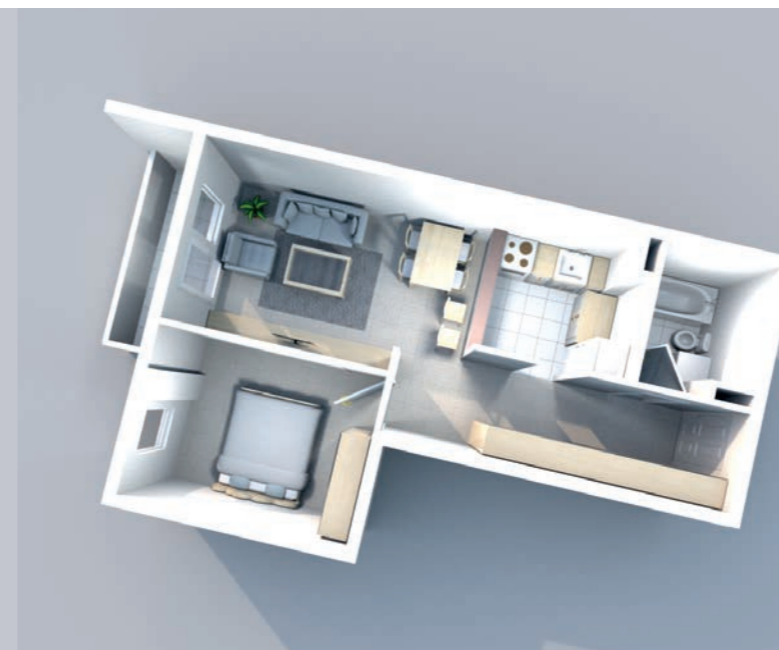
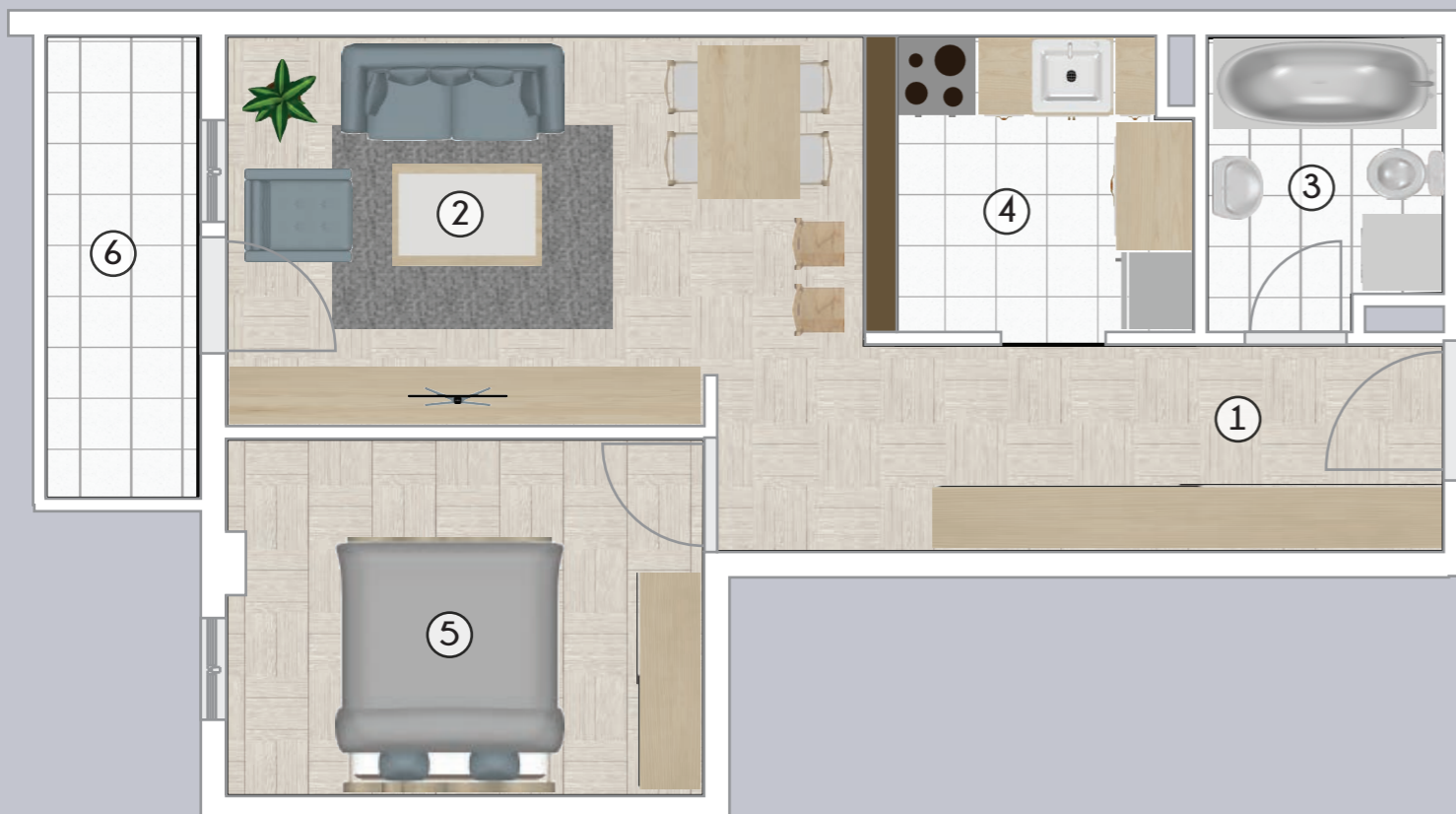


STRUKTURA

1. Hodnik	4,87 m ²
2. Kombinovana soba	18,06 m ²
3. Kupatio	5,14 m ²
4. Kuhinja	4,30 m ²
5. Soba	12,35 m ²
6. Terasa	4,11 m ²

UKUPNO: 48,83 m²





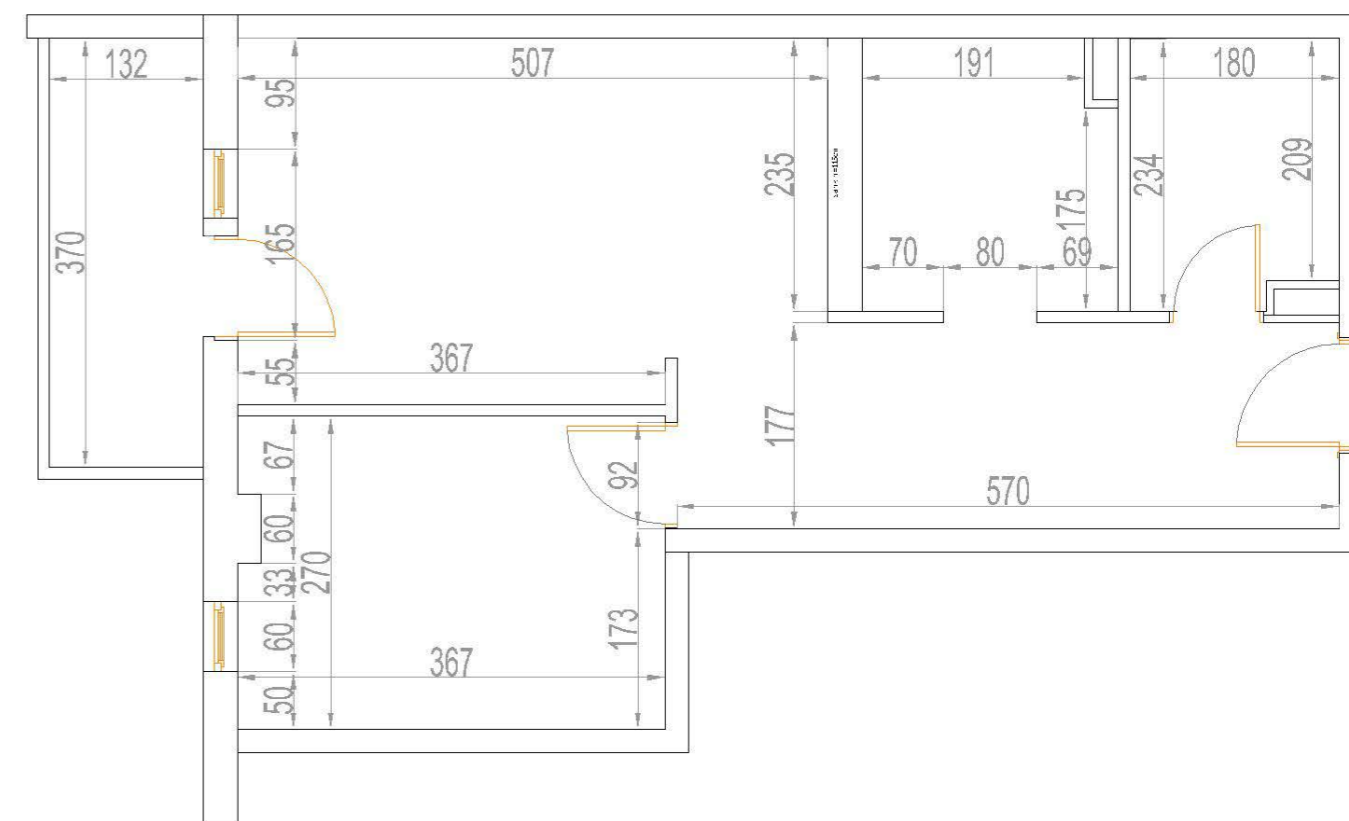
DVOSOBAN STAN KOJI SE NALAZI OD I DO VI SPRATA PL 2

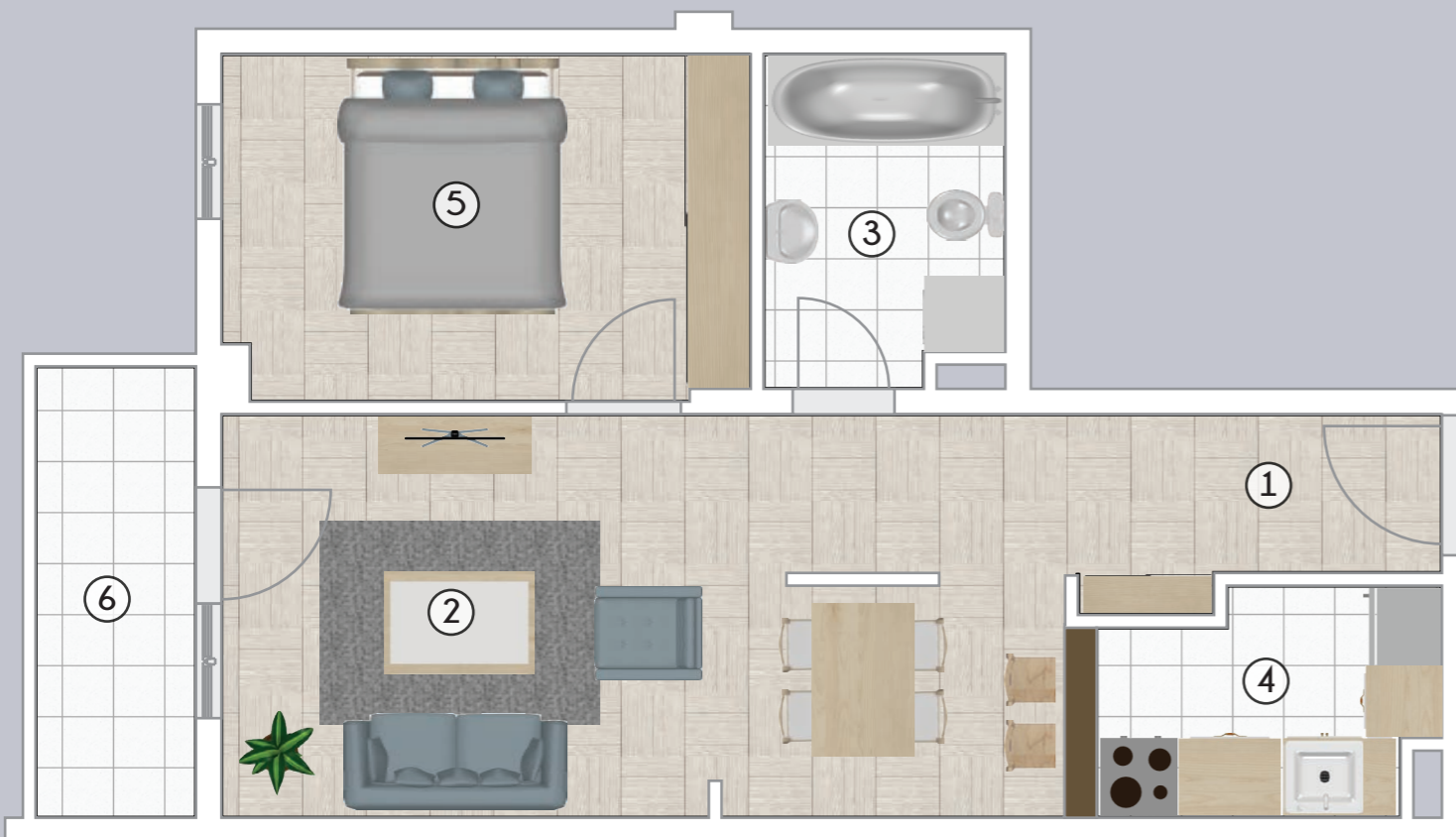


STRUKTURA

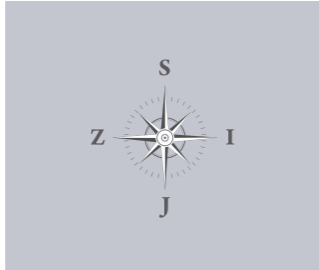
1. Hodnik	9,57 m ²
2. Kombinovana soba	15,89 m ²
3. Kupatio	4,07 m ²
4. Kuhinja	5,70 m ²
5. Soba	9,80 m ²
6. Terasa	4,60 m ²

UKUPNO: 49,63 m²





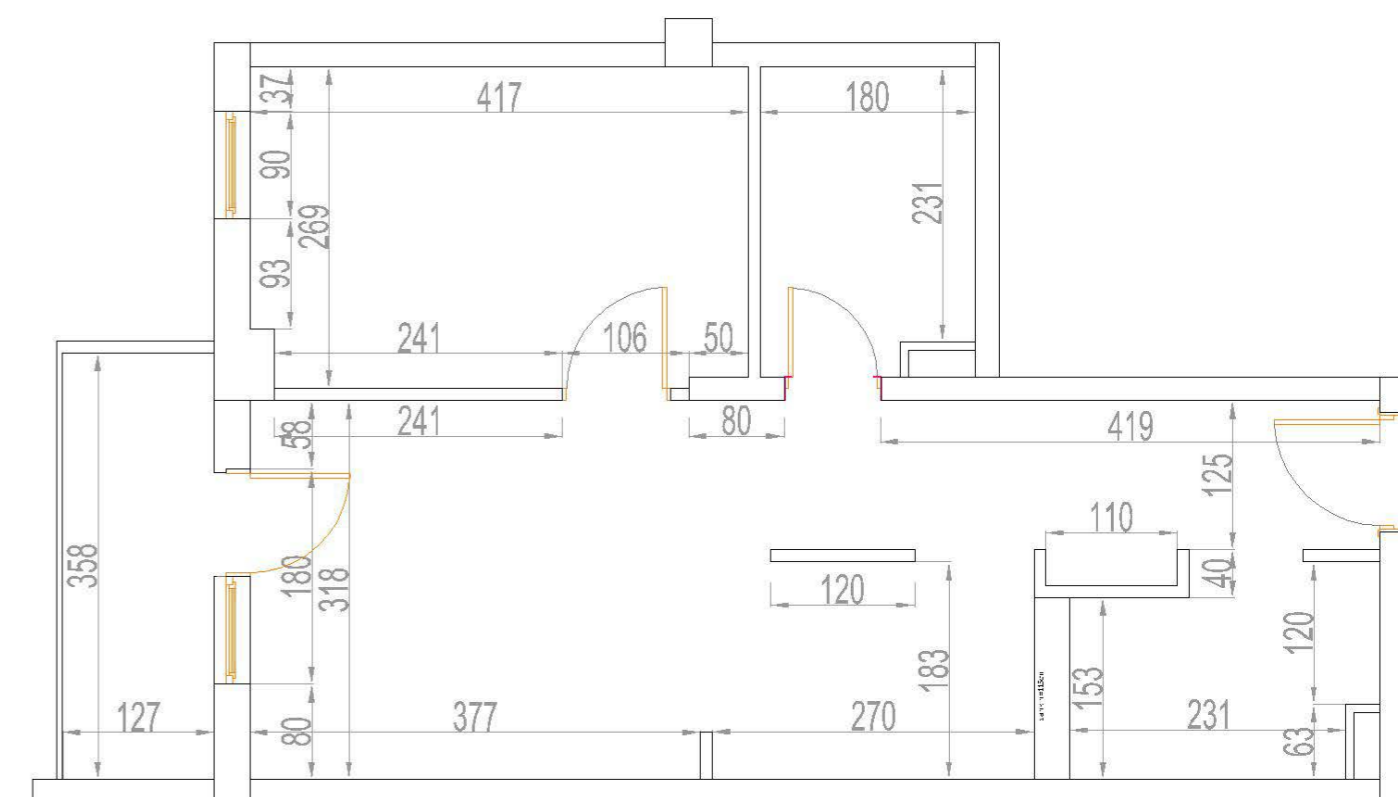
DVOSOBAN STAN KOJI SE NALAZI OD I DO VI SPRATA PL 2

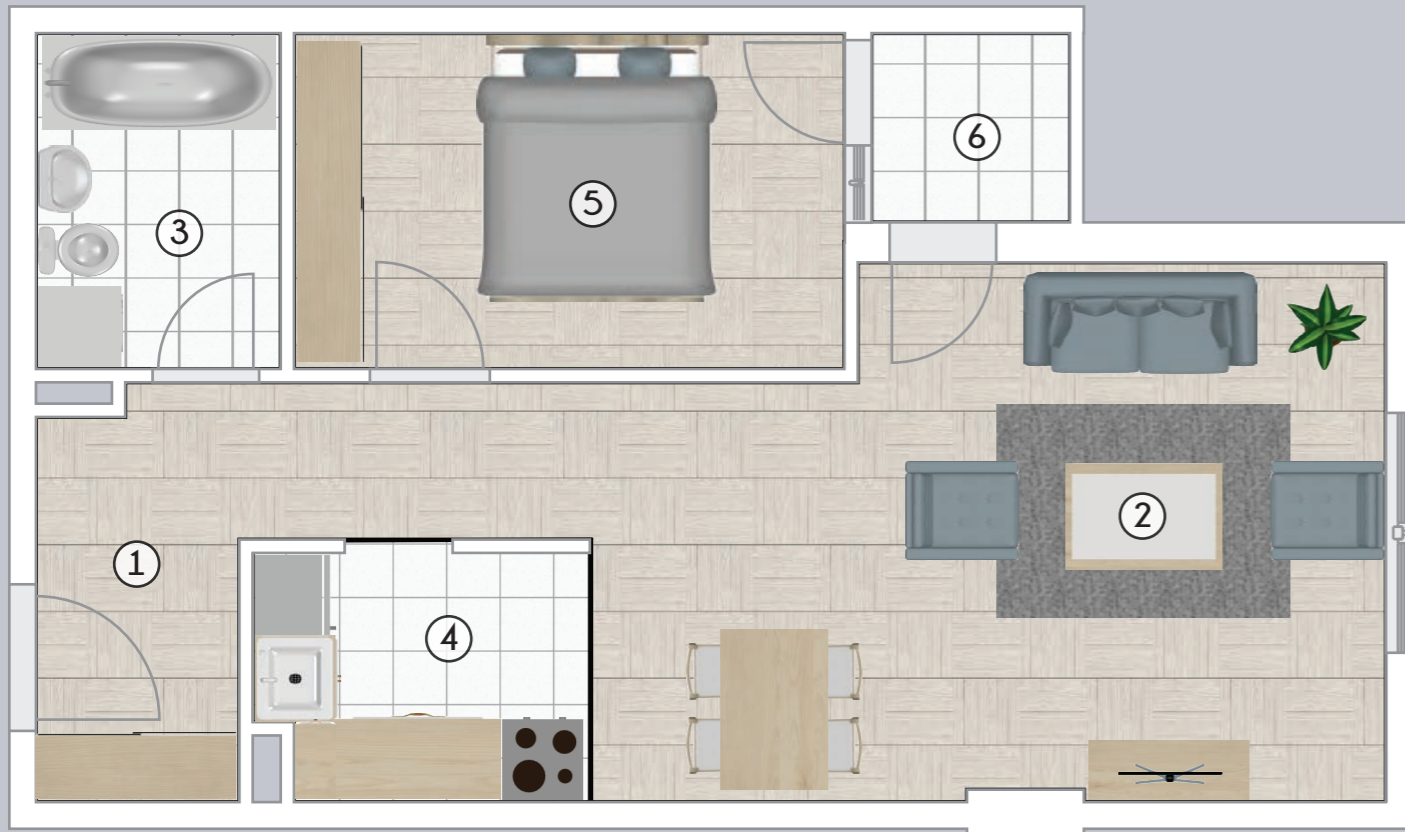


STRUKTURA

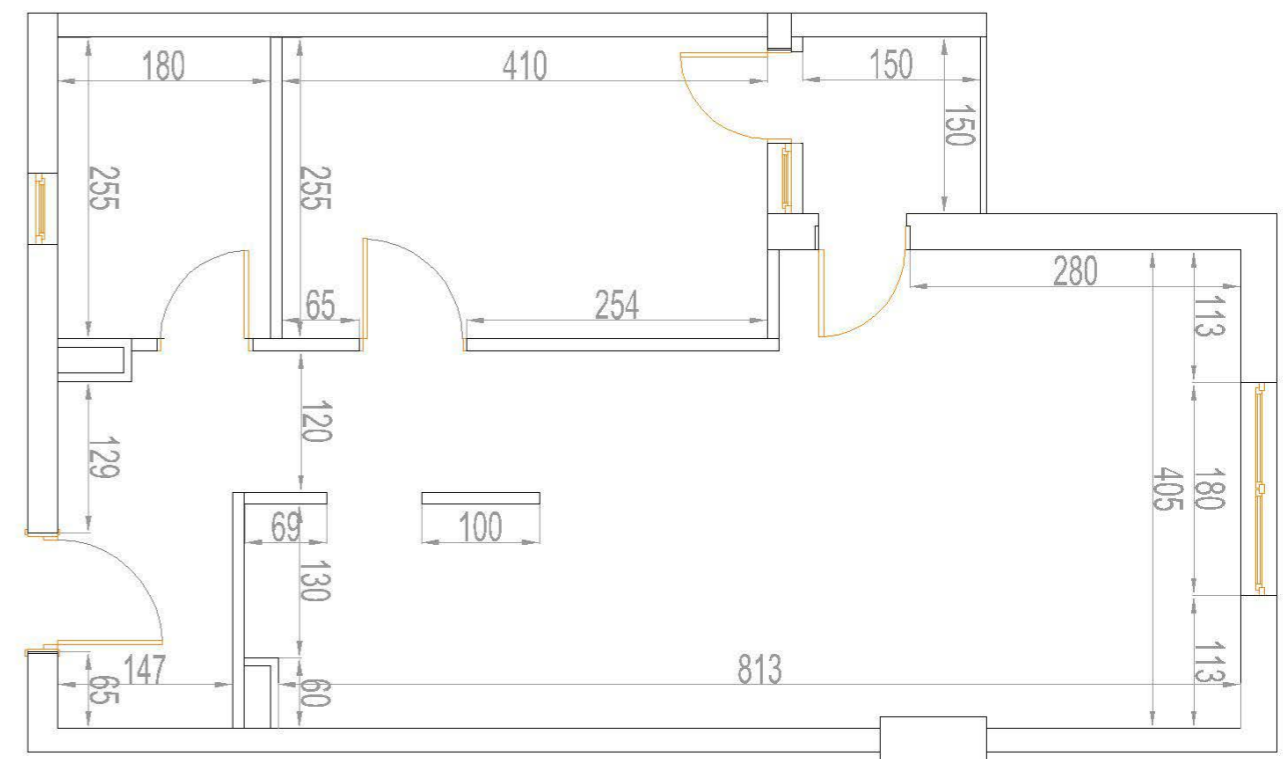
1. Hodnik	5,27 m ²
2. Kombinovana soba	19,32 m ²
3. Kupatilo	4,50 m ²
4. Kuhinja	4,72 m ²
5. Soba	11,02 m ²
6. Terasa	4,80 m ²

UKUPNO: 49,63 m²





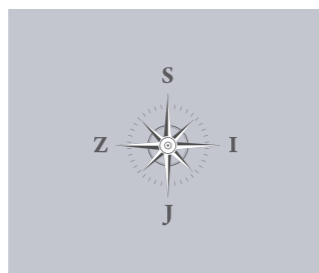
DVOSOBAN STAN KOJI SE NALAZI OD I DO VI SPRATA PL 1

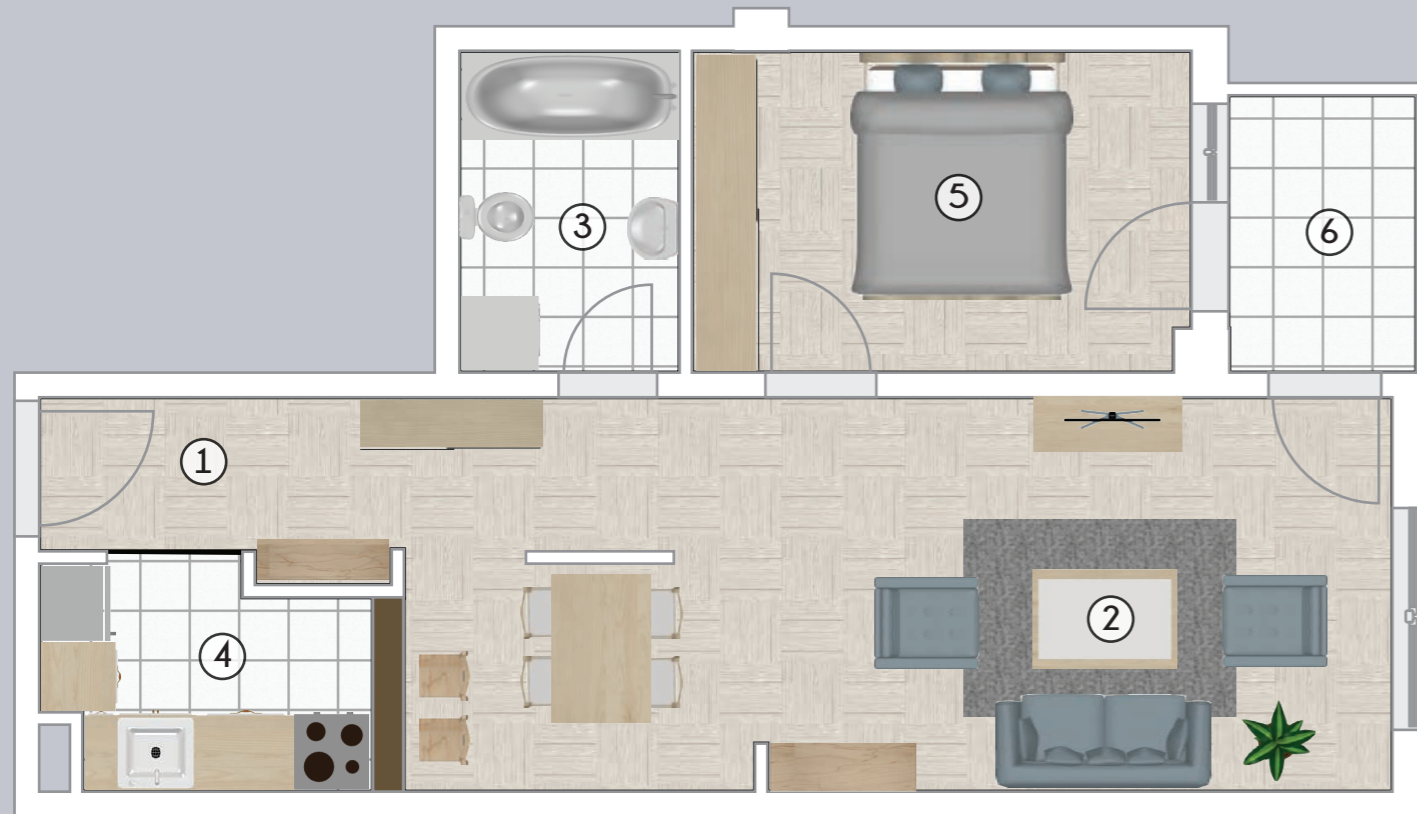


STRUKTURA

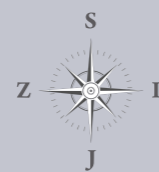
1. Hodnik	7,98 m ²
2. Kombinovana soba	21,96 m ²
3. Kupatio	4,60 m ²
4. Kuhinja	4,57 m ²
5. Soba	10,47 m ²
6. Terasa	2,17 m ²

UKUPNO: 51,75 m²

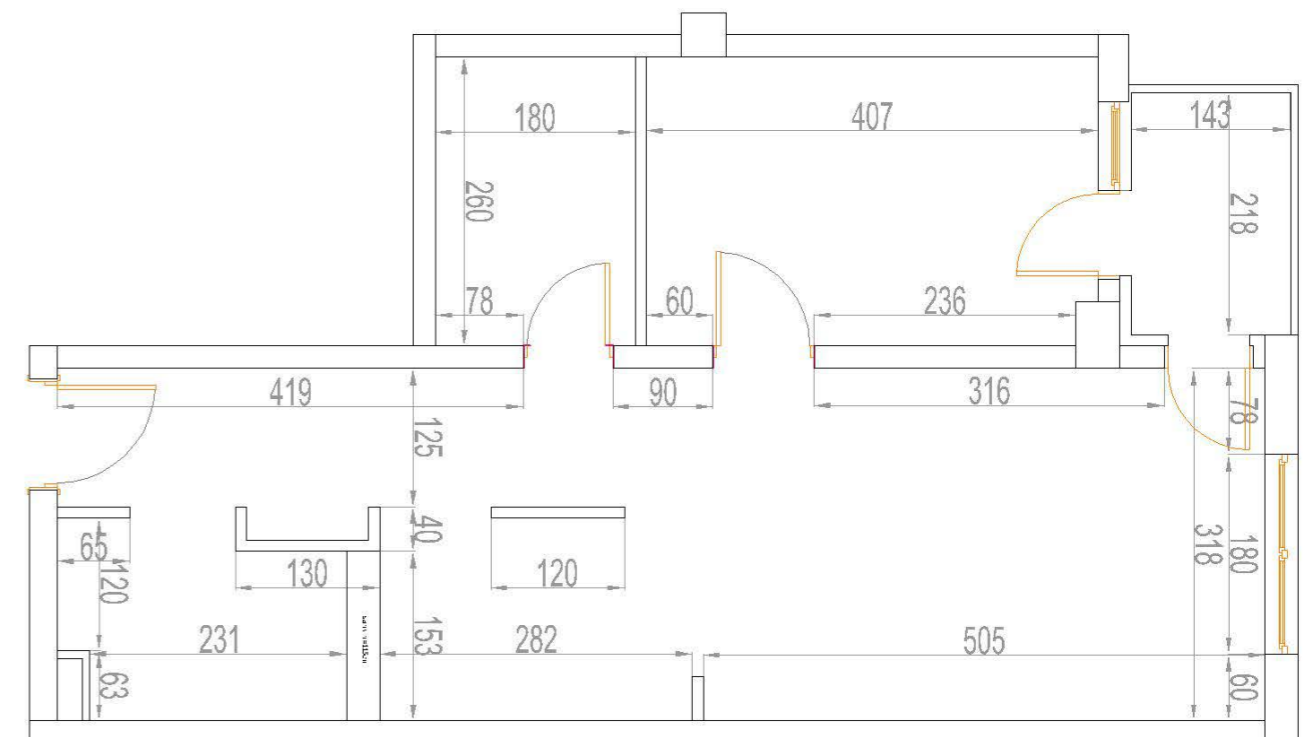


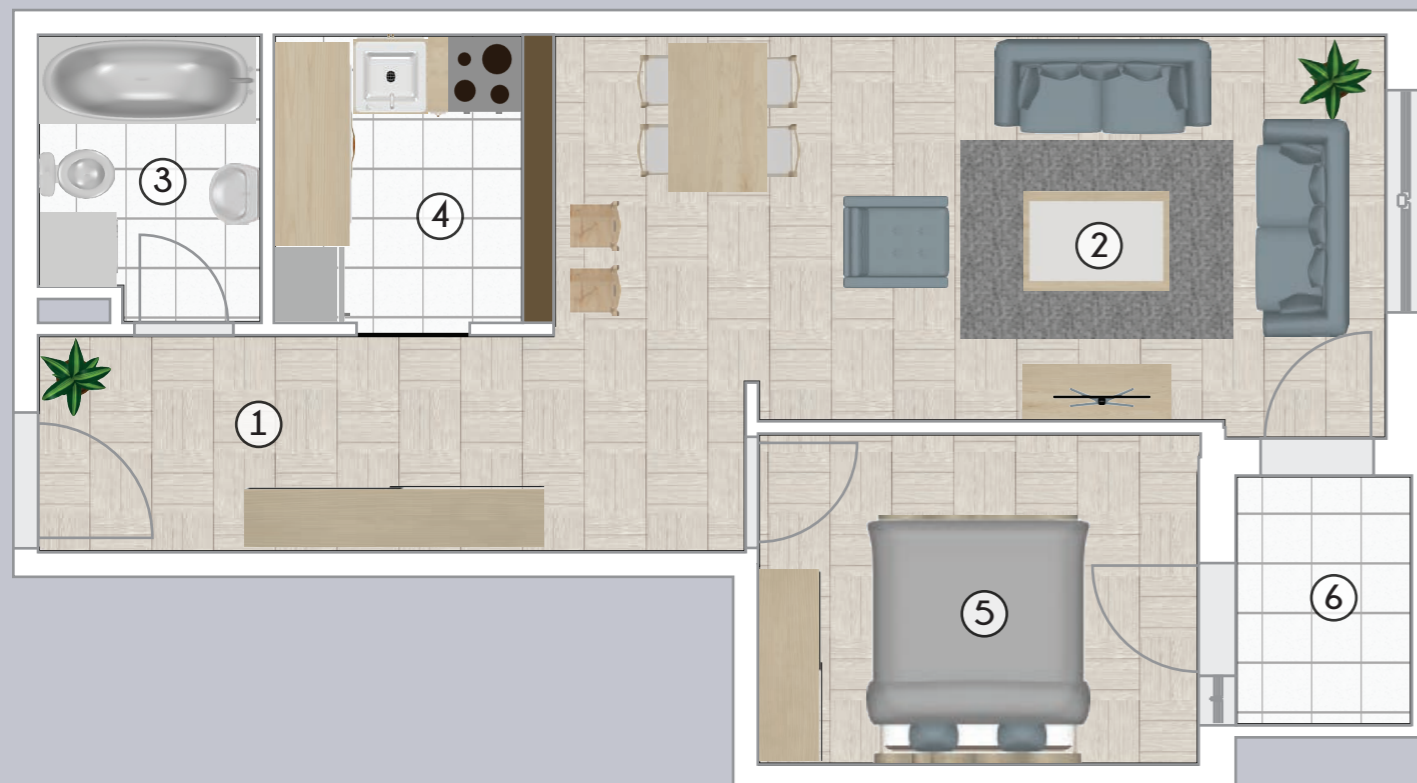


DVOSOBAN STAN KOJI SE NALAZI OD I DO VI SPRATA PL 2

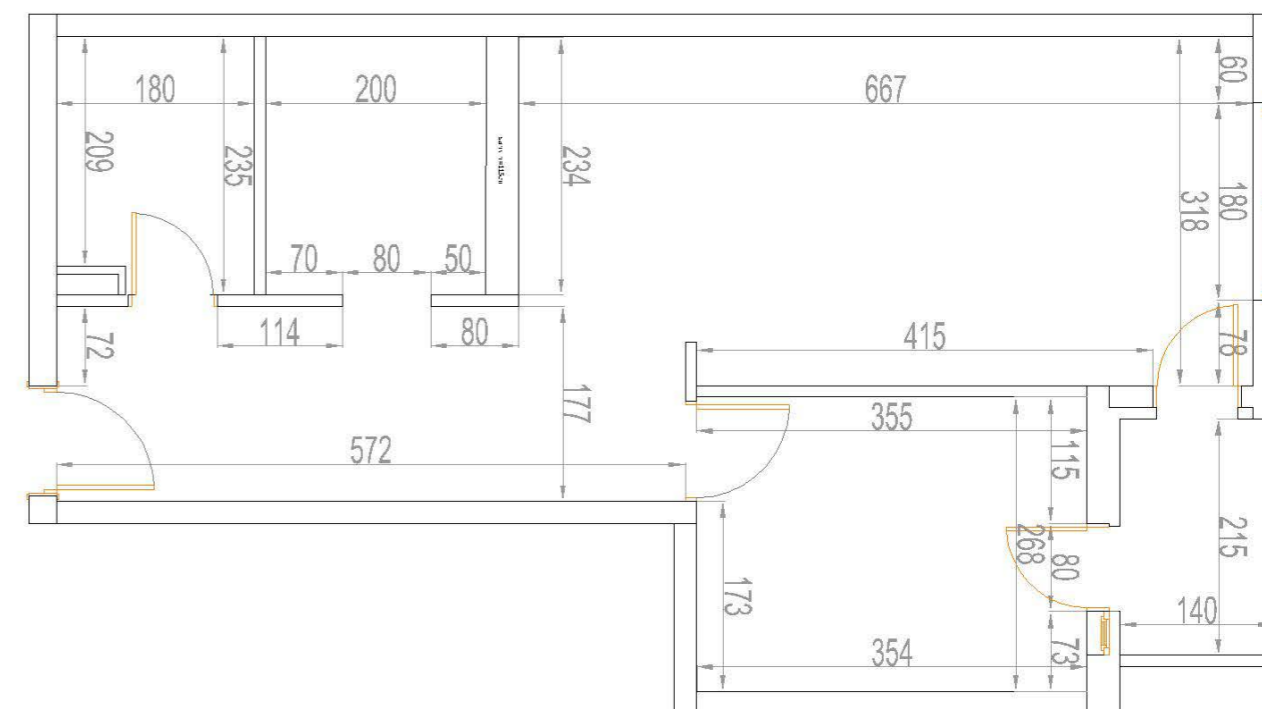
**STRUKTURA**

1. Hodnik	4,12 m ²
2. Kombinovana soba	25,30 m ²
3. Kupatio	4,50 m ²
4. Kuhinja	4,72 m ²
5. Soba	10,55 m ²
6. Terasa	3,02 m ²

UKUPNO: 52,21 m²



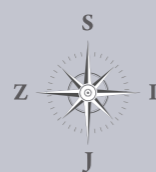
DVOSOBAN STAN KOJI SE NALAZI OD I DO VI SPRATA PL 2

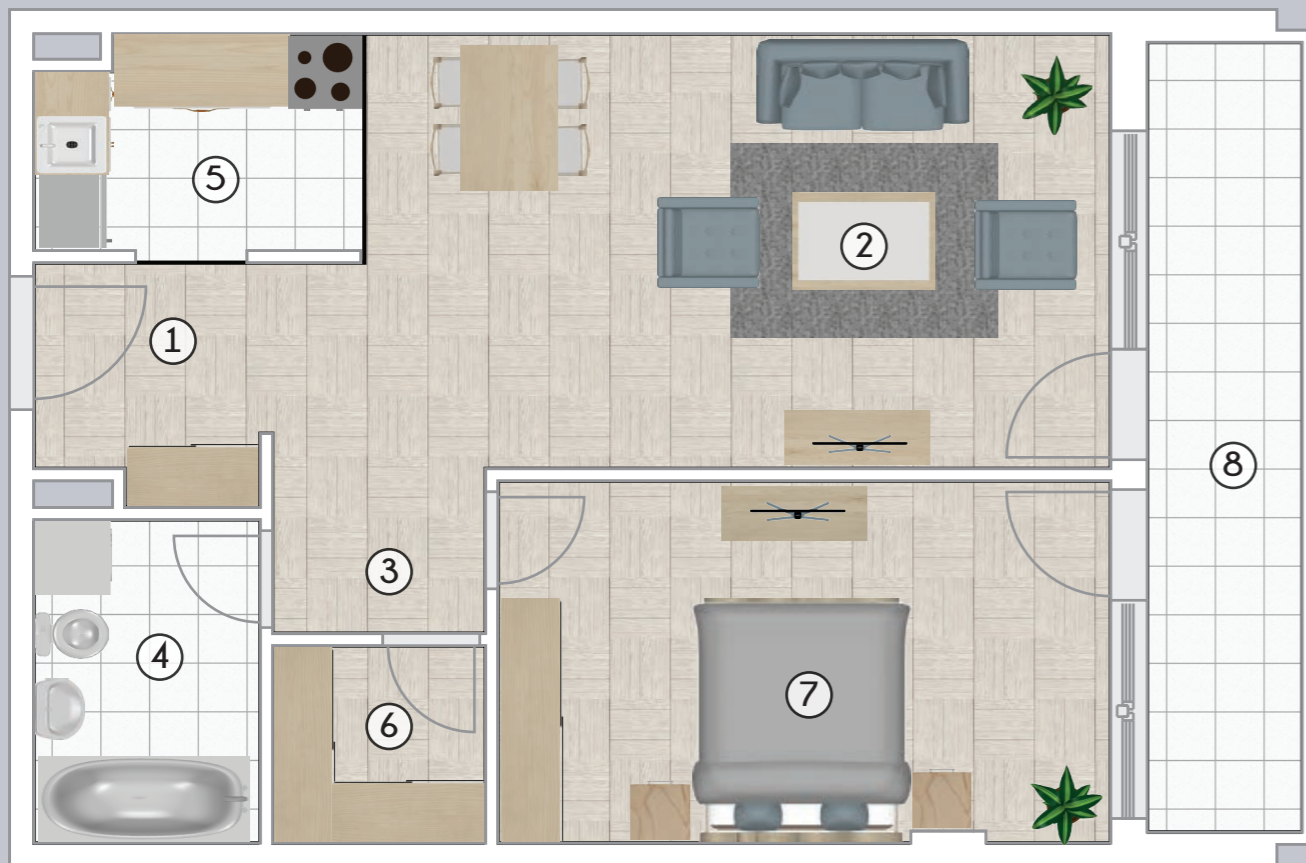


STRUKTURA

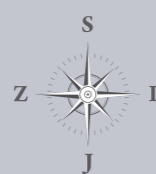
1. Hodnik	8,37 m ²
2. Kombinovana soba	22,27 m ²
3. Kupatio	4,13 m ²
4. Kuhinja	5,22 m ²
5. Soba	9,42 m ²
6. Terasa	3,02 m ²

UKUPNO: 52,43 m²

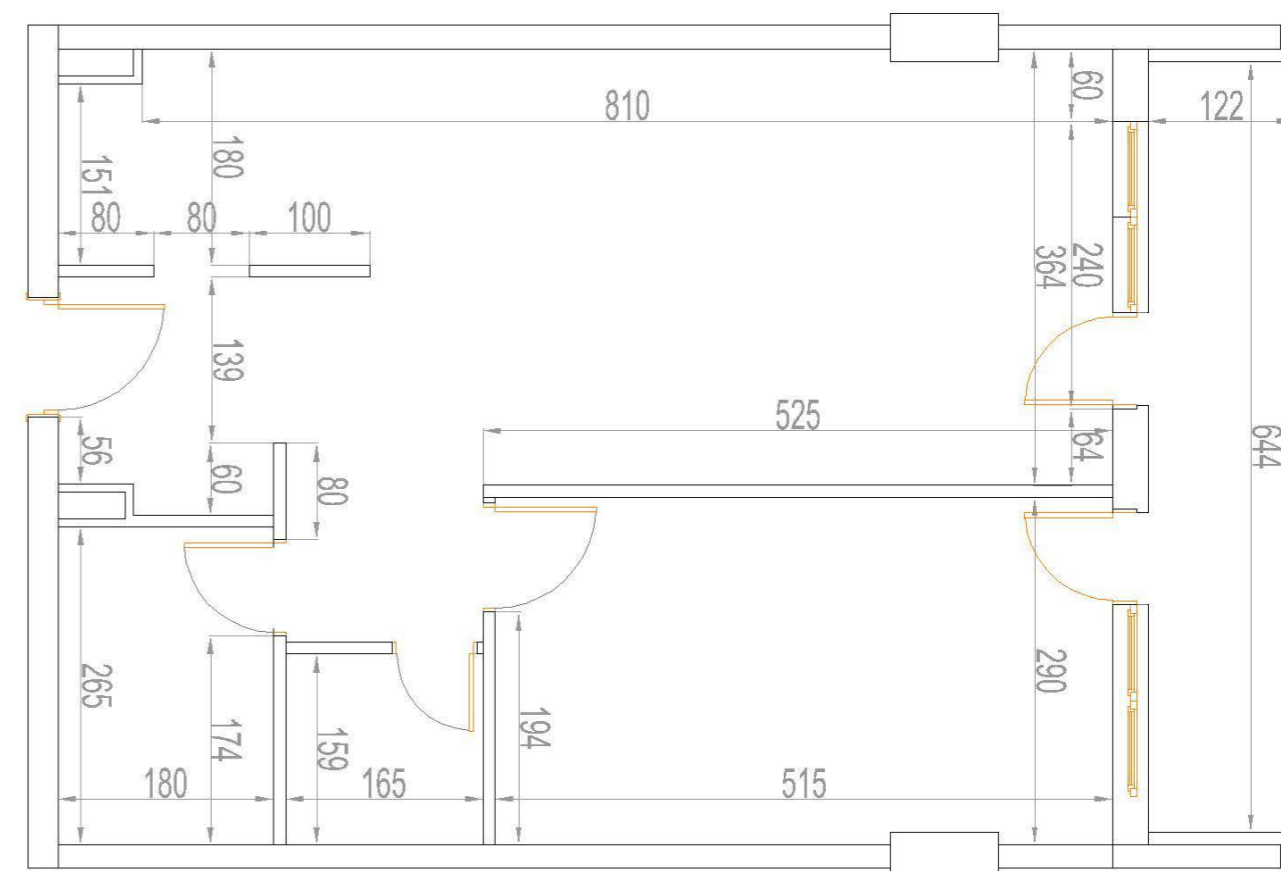




DVOSOBAN STAN KOJI SE NALAZI OD I DO VI SPRATA PL 1

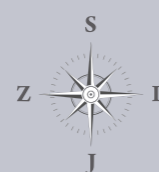
**STRUKTURA**

1. Hodnik	3,56 m ²
2. Kombinovana soba	23,85 m ²
3. Degažman	2,16 m ²
4. Kupatio	4,77 m ²
5. Kuhinja	4,48 m ²
6. Ostava	2,62 m ²
7. Soba	14,86 m ²
8. Terasa	7,80 m ²

UKUPNO: 64,10 m²



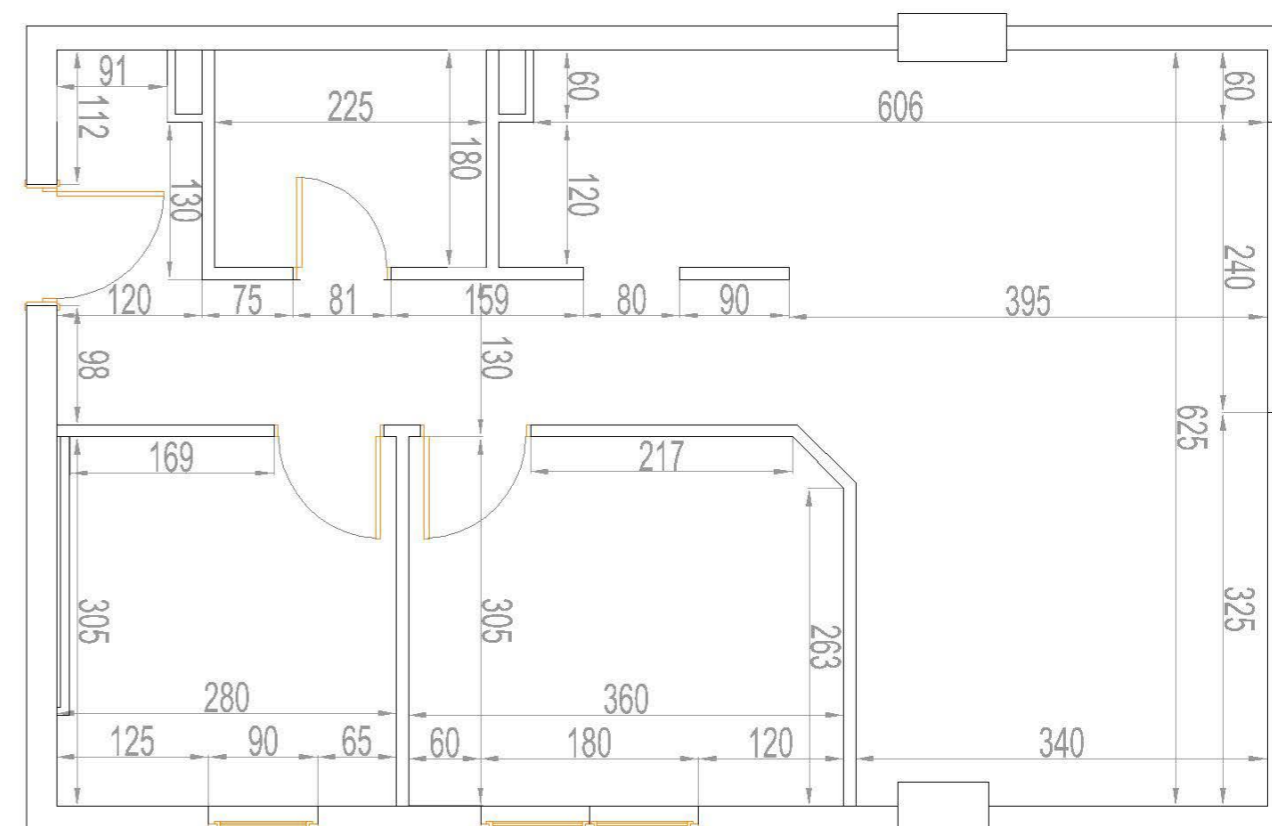
DVOIPOSOBAN STAN KOJI SE NALAZI NA I SPRATU PL 1



STRUKTURA

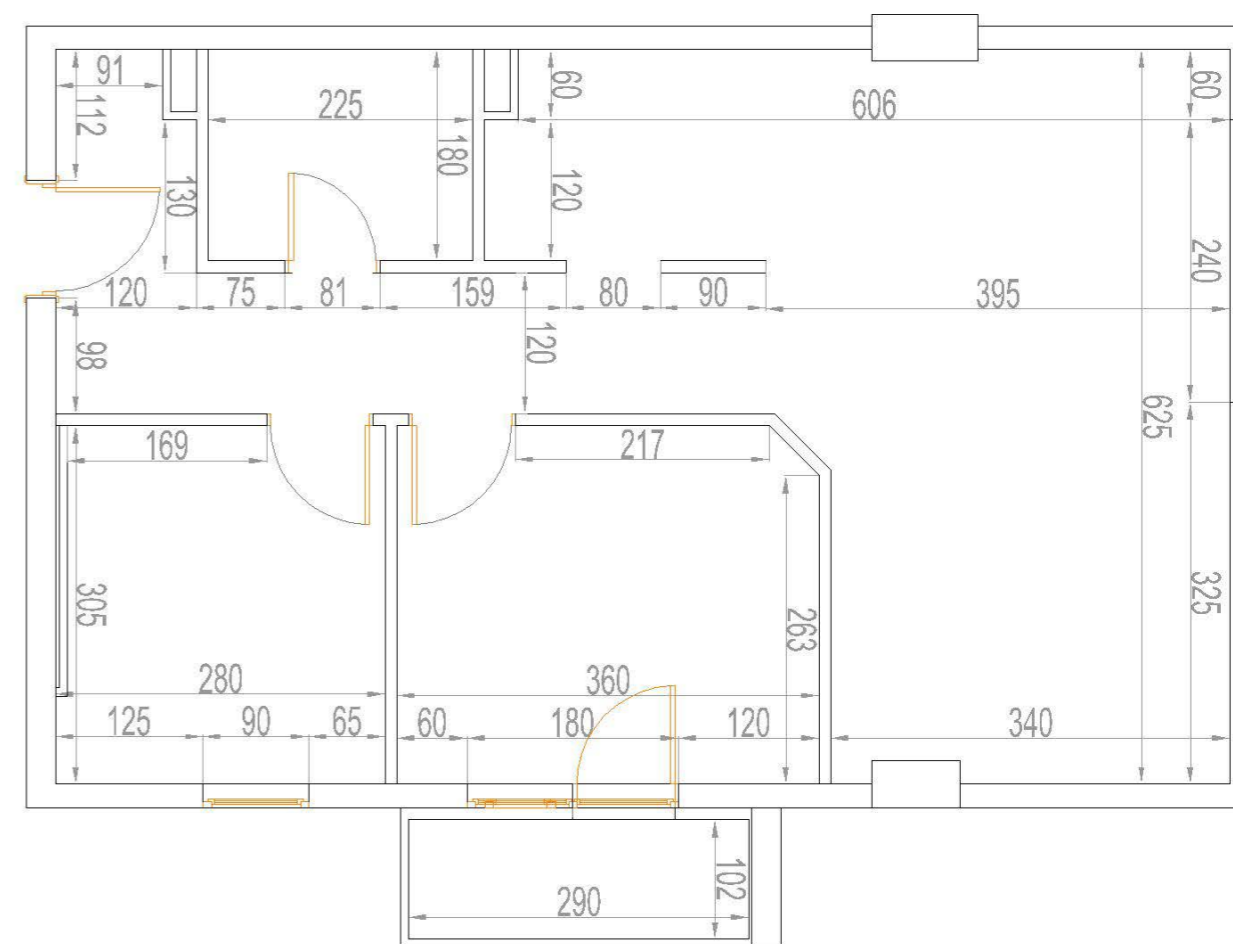
1. Hodnik	9,57 m ²
2. Kombinovana soba	22,56 m ²
3. Kupatio	4,05 m ²
4. Kuhinja	4,32 m ²
5. Soba	8,34 m ²
6. Soba	10,91 m ²

UKUPNO: 59,75 m²





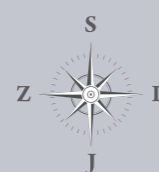
DVOIPOSOBAN STAN KOJI SE NALAZI OD II DO VI SPRATA PL 1



STRUKTURA

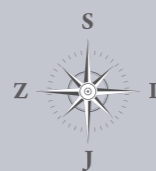
1. Hodnik	9,67 m ²
2. Kombinovana soba	22,56 m ²
3. Kupatio	4,05 m ²
4. Kuhinja	4,32 m ²
5. Soba	8,34 m ²
6. Soba	10,91 m ²
7. Terasa	3,25 m ²

UKUPNO: 63,10 m²





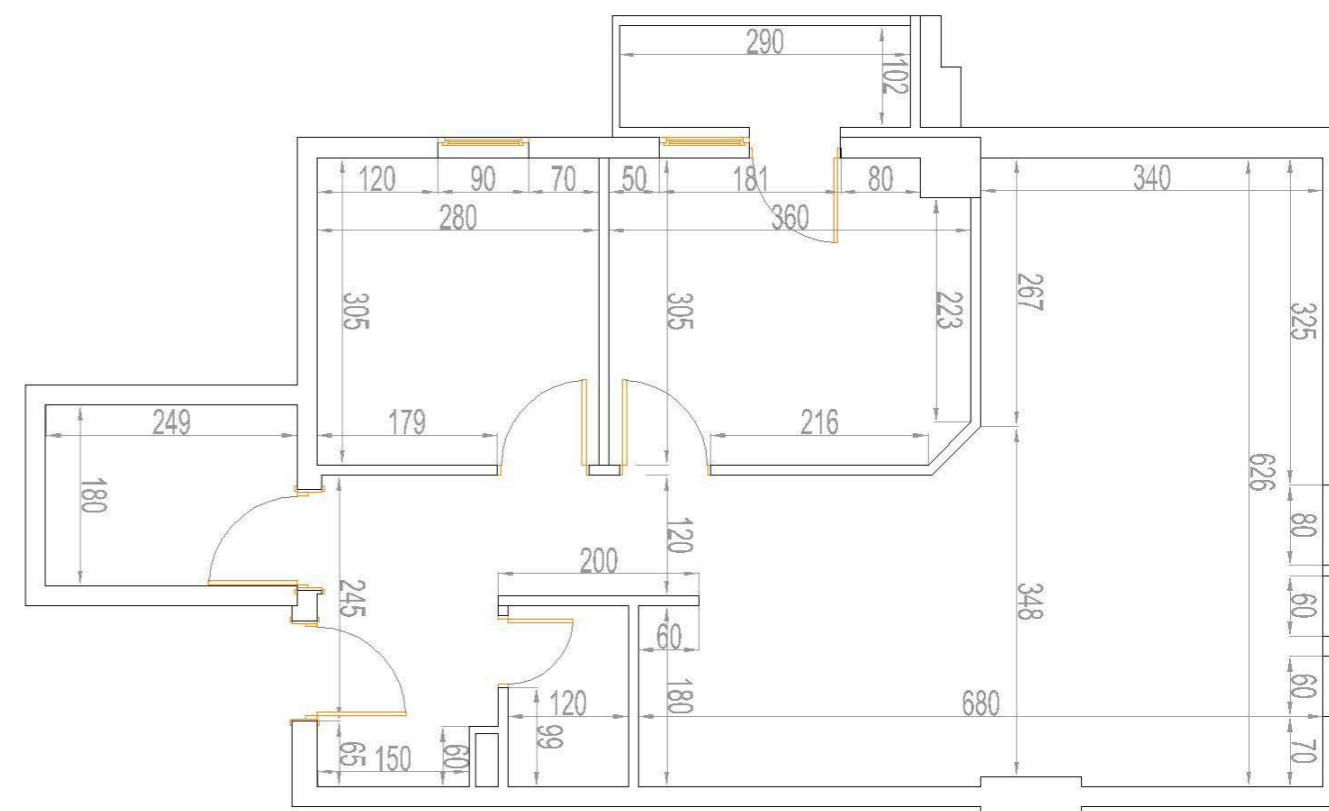
DVOIPOSOBAN STAN KOJI SE NALAZI OD I DO VI SPRATA PL 3

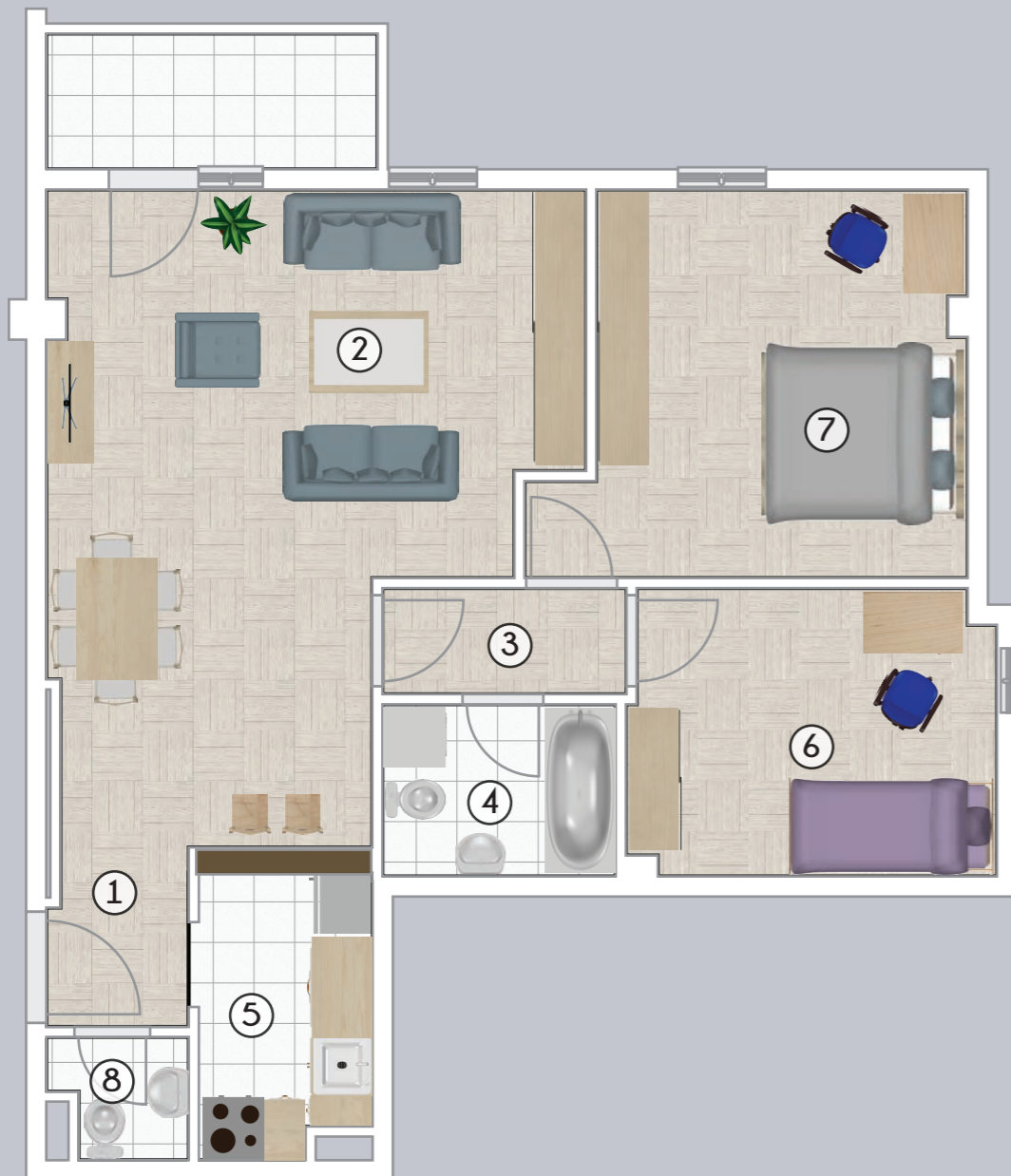


STRUKTURA

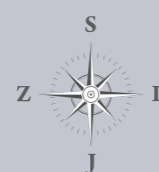
1. Hodnik	8,14 m ²
2. Kombinovana soba	26,42 m ²
3. Kupatio	4,32 m ²
4. Kuhinja	4,15 m ²
5. Soba	8,57 m ²
6. Soba	10,70 m ²
7. Toalet	2,16 m ²
8. Terasa	3,30 m ²

UKUPNO: 67,76 m²





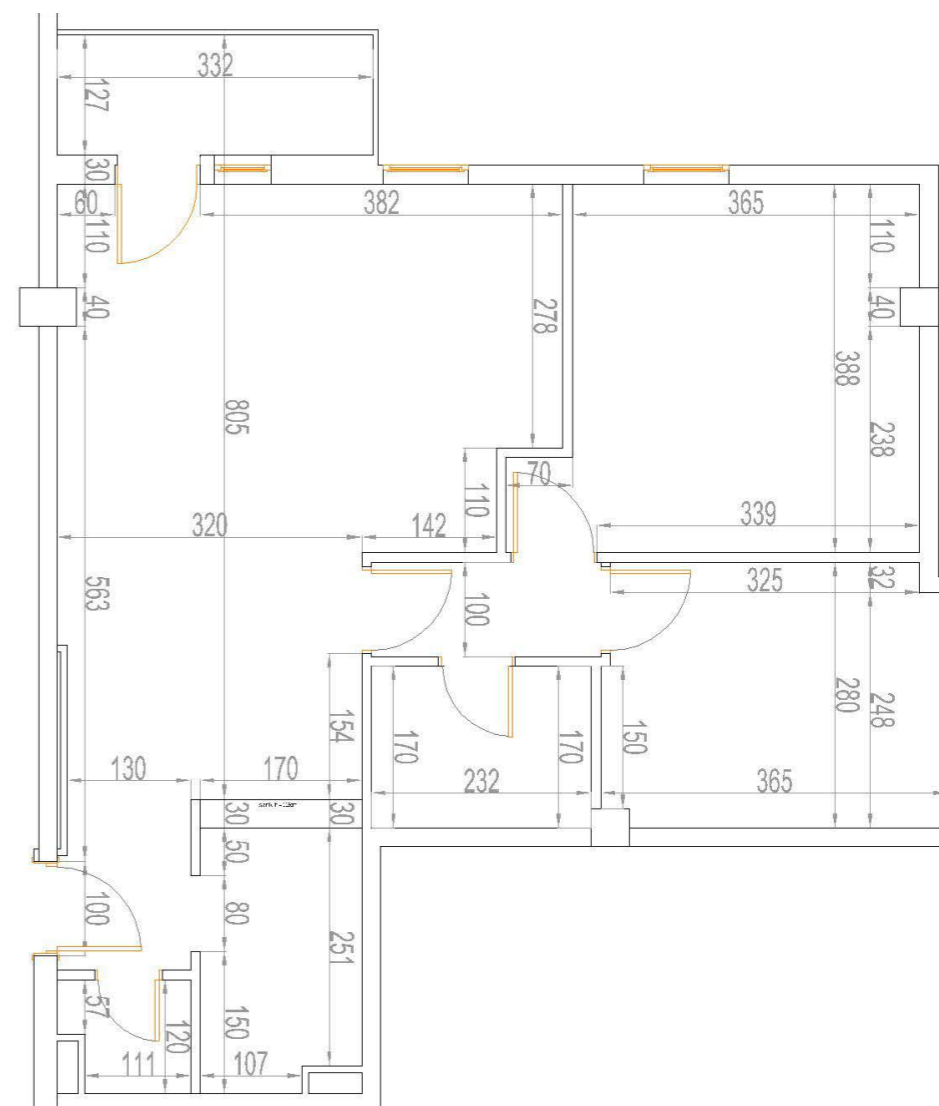
TROSOBAN STAN KOJI SE NALAZI OD I DO VI SPRATA PL 2



STRUKTURA

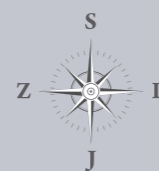
1. Hodnik	2,26 m ²
2. Kombinovana soba	28,08 m ²
3. Degažman	2,41 m ²
4. Kupatio	3,75 m ²
5. Kuhinja	5,09 m ²
6. Soba	9,84 m ²
7. Soba	14,38 m ²
8. Toalet	1,50 m ²
9. Terasa	4,60 m ²

UKUPNO: 71,91 m²





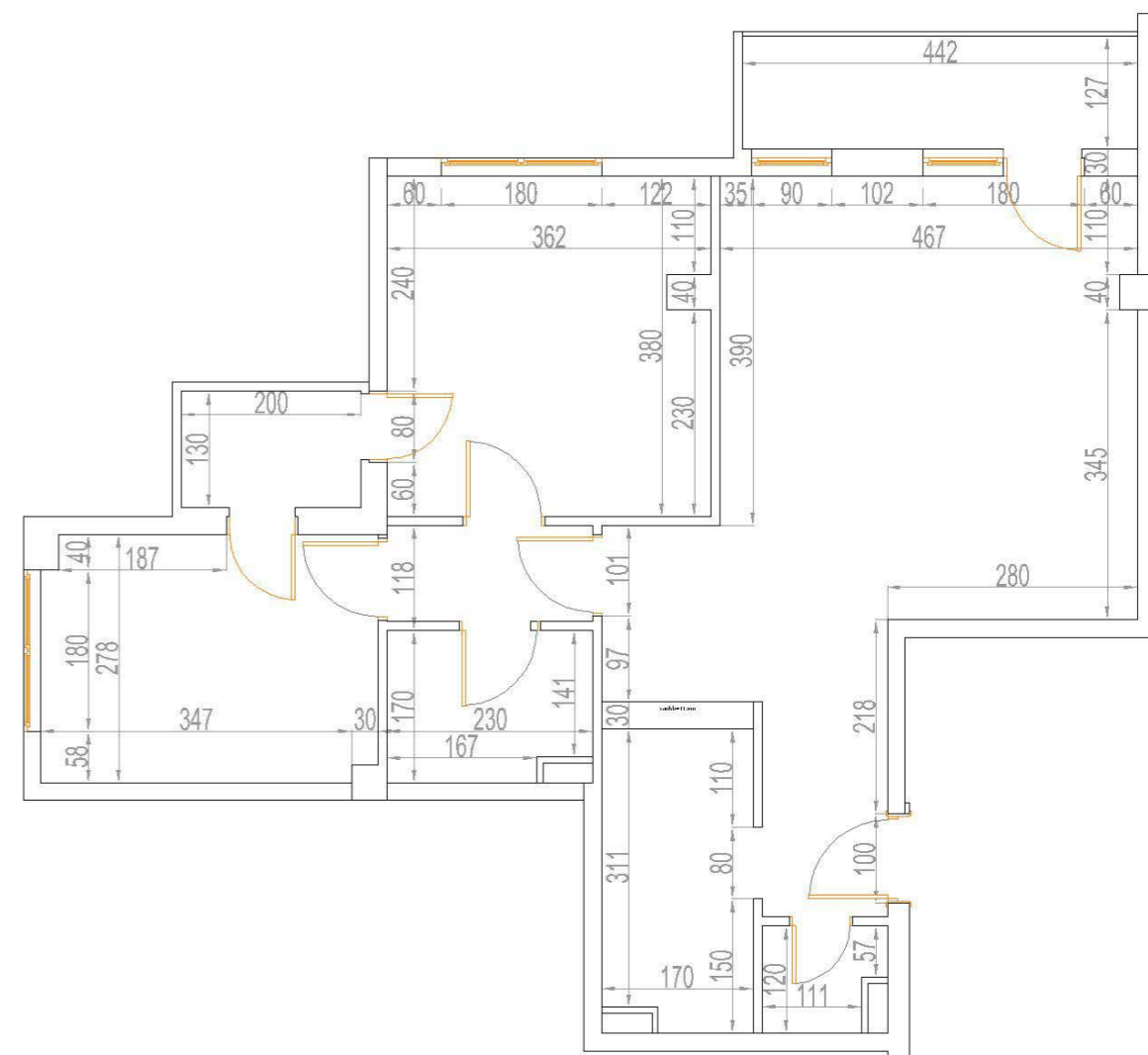
TROSOBAN STAN KOJI SE NALAZI OD I DO VI SPRATA PL 2

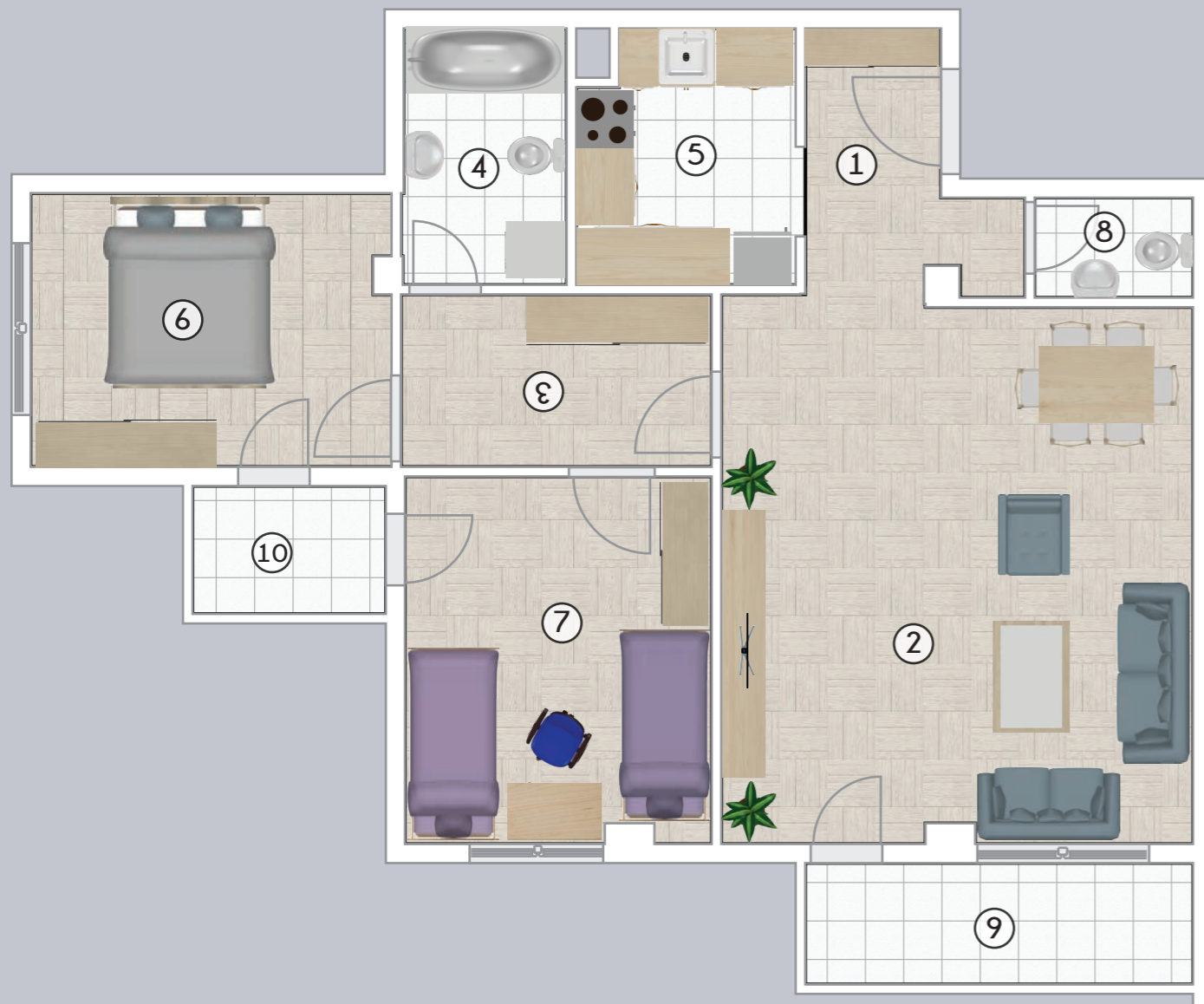


STRUKTURA

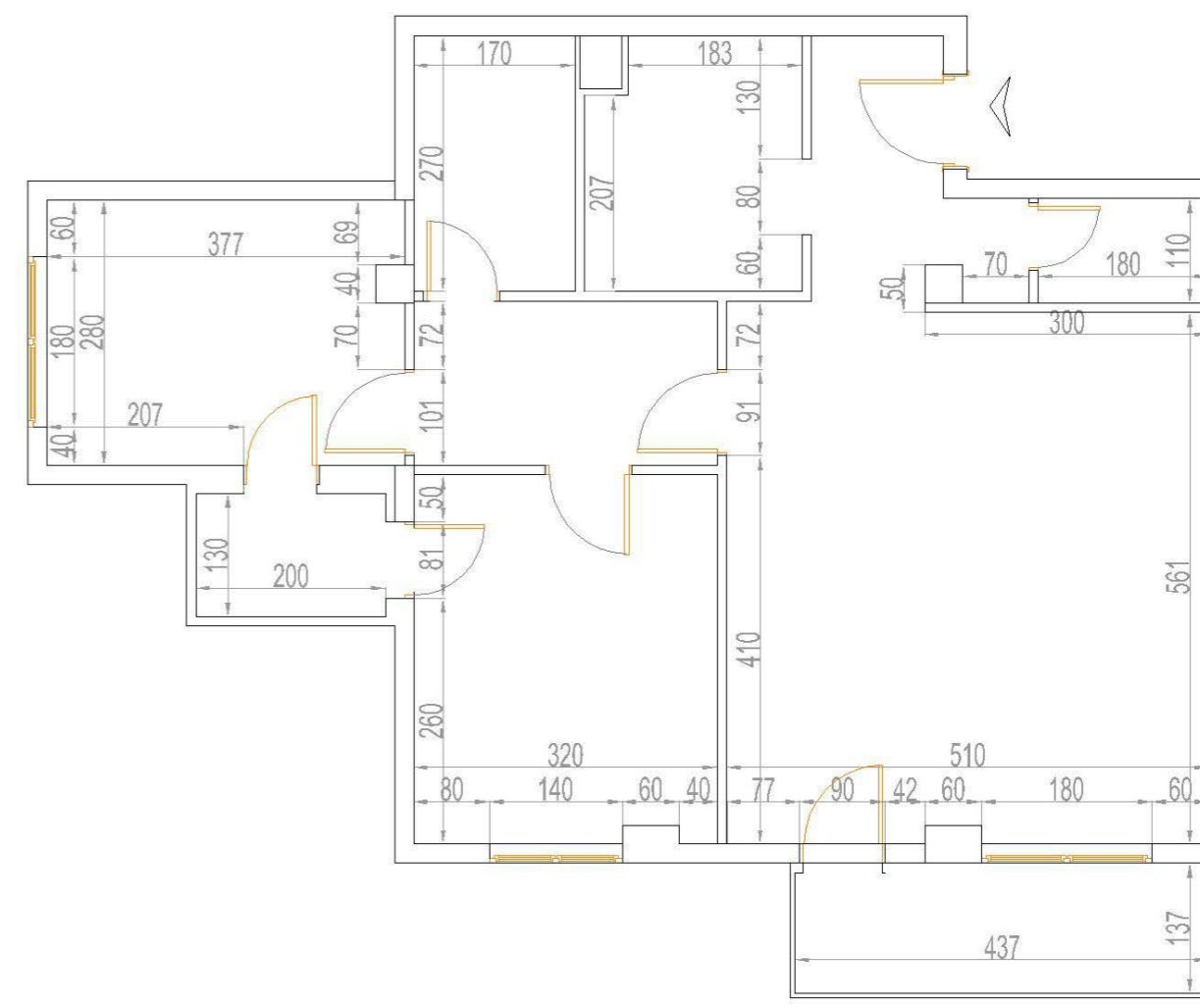
1. Hodnik	3,27 m ²
2. Kombinovana soba	28,36 m ²
3. Degažman	2,58 m ²
4. Kupatio	3,73 m ²
5. Kuhinja	5,07 m ²
6. Soba	10,34 m ²
7. Soba	13,46 m ²
8. Toalet	1,50 m ²
9. Terasa	5,50 m ²
10. Terasa	2,60 m ²

UKUPNO: 76,41 m²



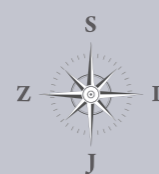


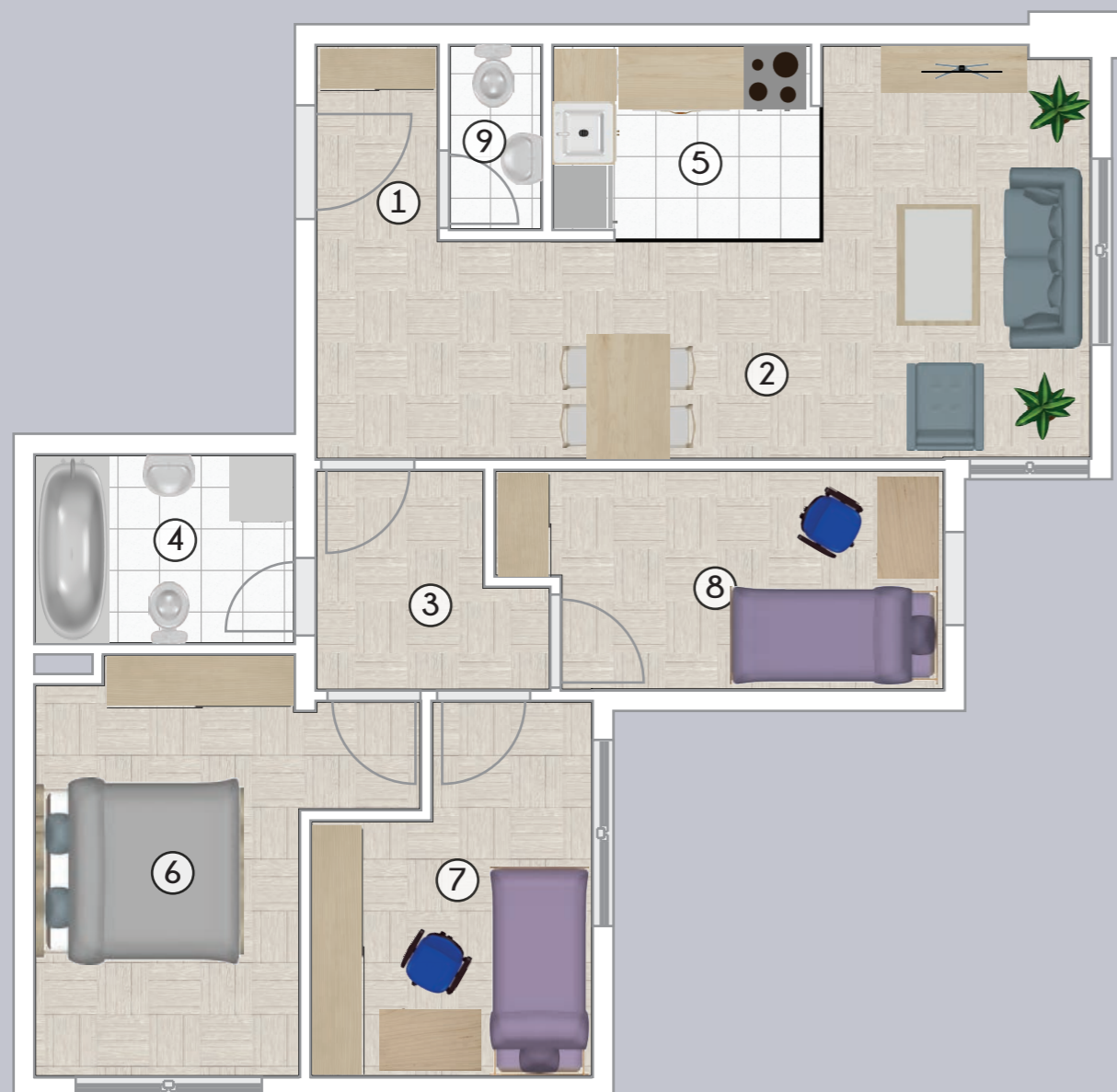
TROSOBAN STAN KOJI SE NALAZI OD I DO VI SPRATA PL 2



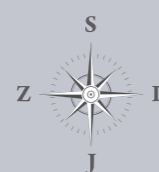
STRUKTURA

1. Hodnik	5,23 m ²
2. Kombinovana soba	29,18 m ²
3. Degažman	5,54 m ²
4. Kupatio	4,59 m ²
5. Kuhinja	6,15 m ²
6. Soba	10,45 m ²
7. Soba	12,36 m ²
8. Toalet	1,80 m ²
9. Terasa	5,55 m ²
10. Terasa	2,60 m ²

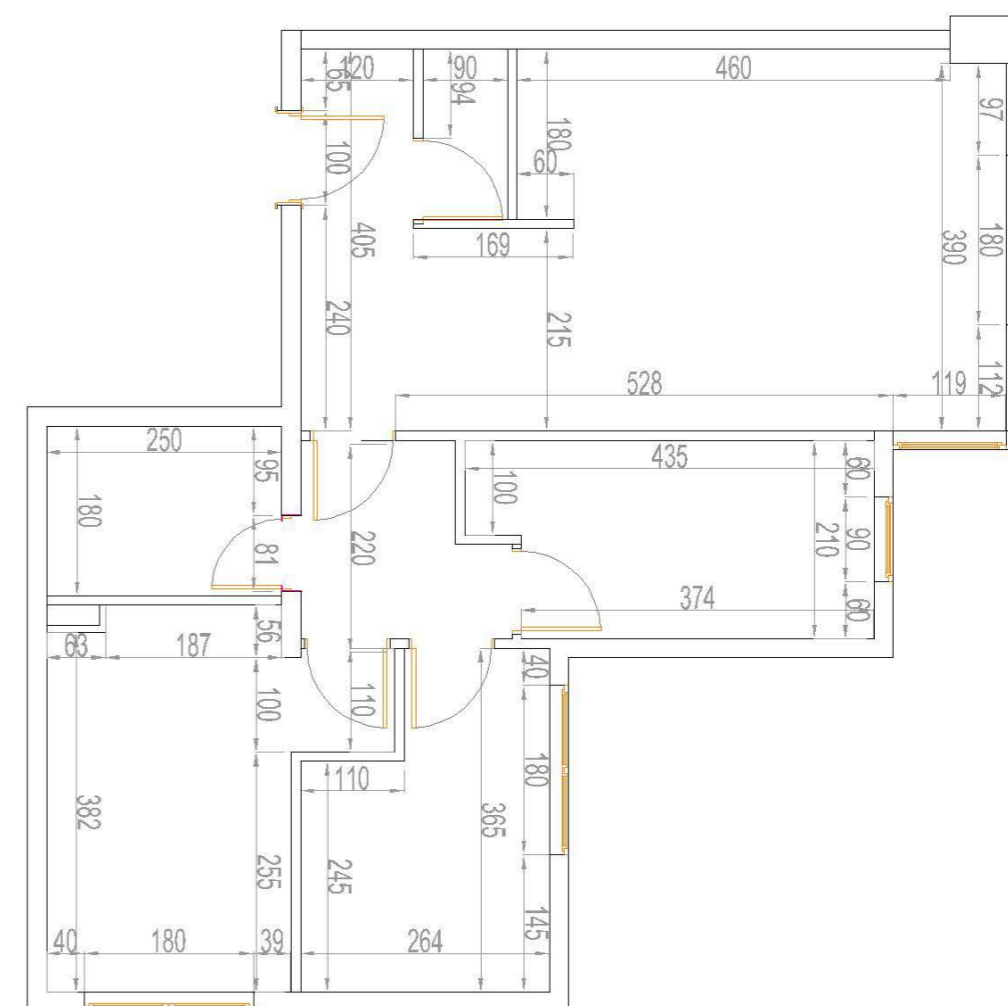
UKUPNO: 83,45 m²

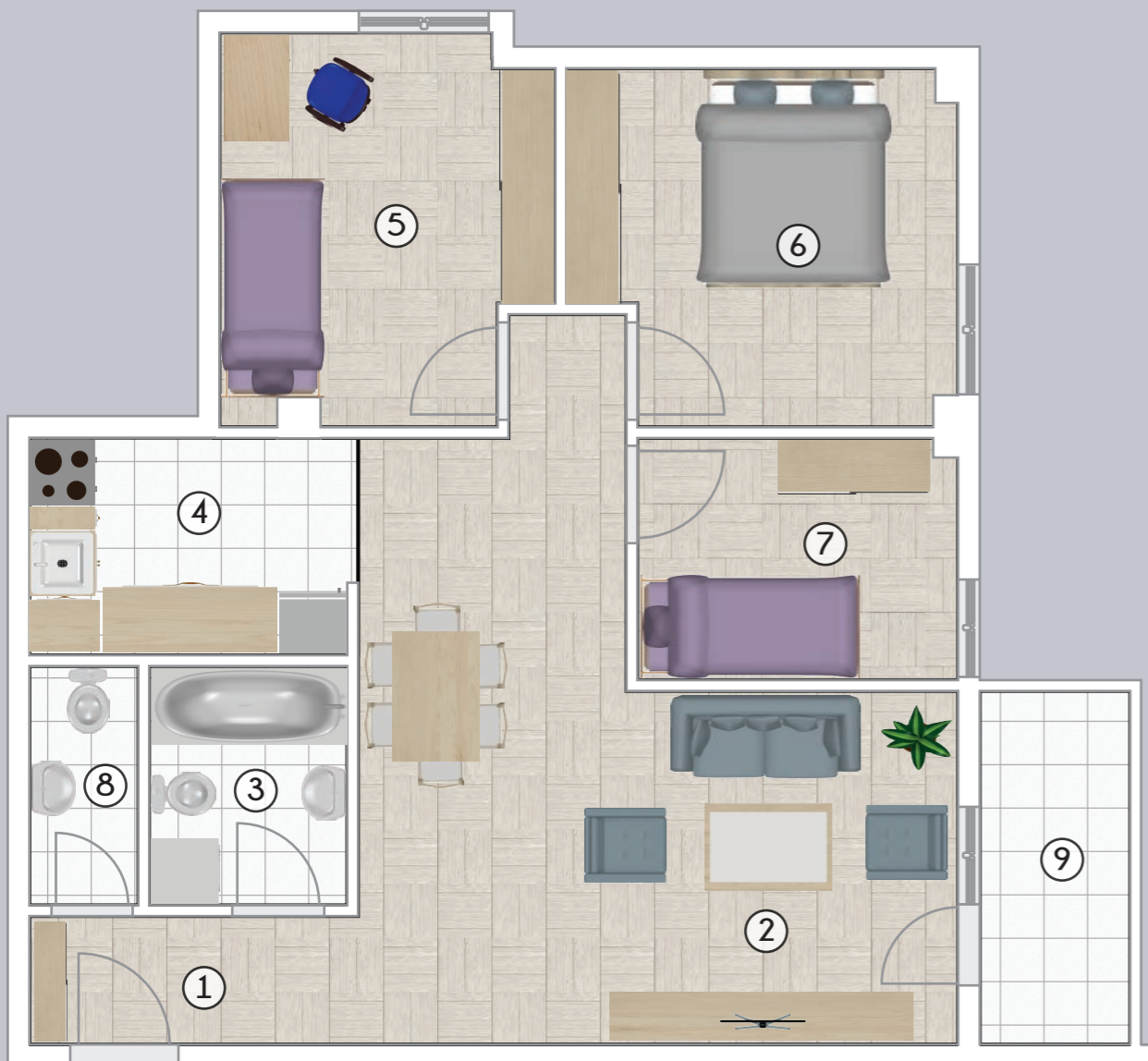


TROIPOSOBAN STAN KOJI SE NALAZI U PRIZMJU PL 3

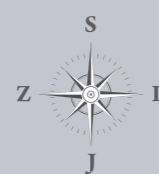
**STRUKTURA**

1. Hodnik	4,82 m ²
2. Kombinovana soba	19,20 m ²
3. Degažman	4,07 m ²
4. Kupatio	4,50 m ²
5. Kuhinja	3,84 m ²
6. Soba	11,63 m ²
7. Soba	8,35 m ²
8. Soba	8,50 m ²
9. Toalet	1,45 m ²

UKUPNO: 66,36 m²



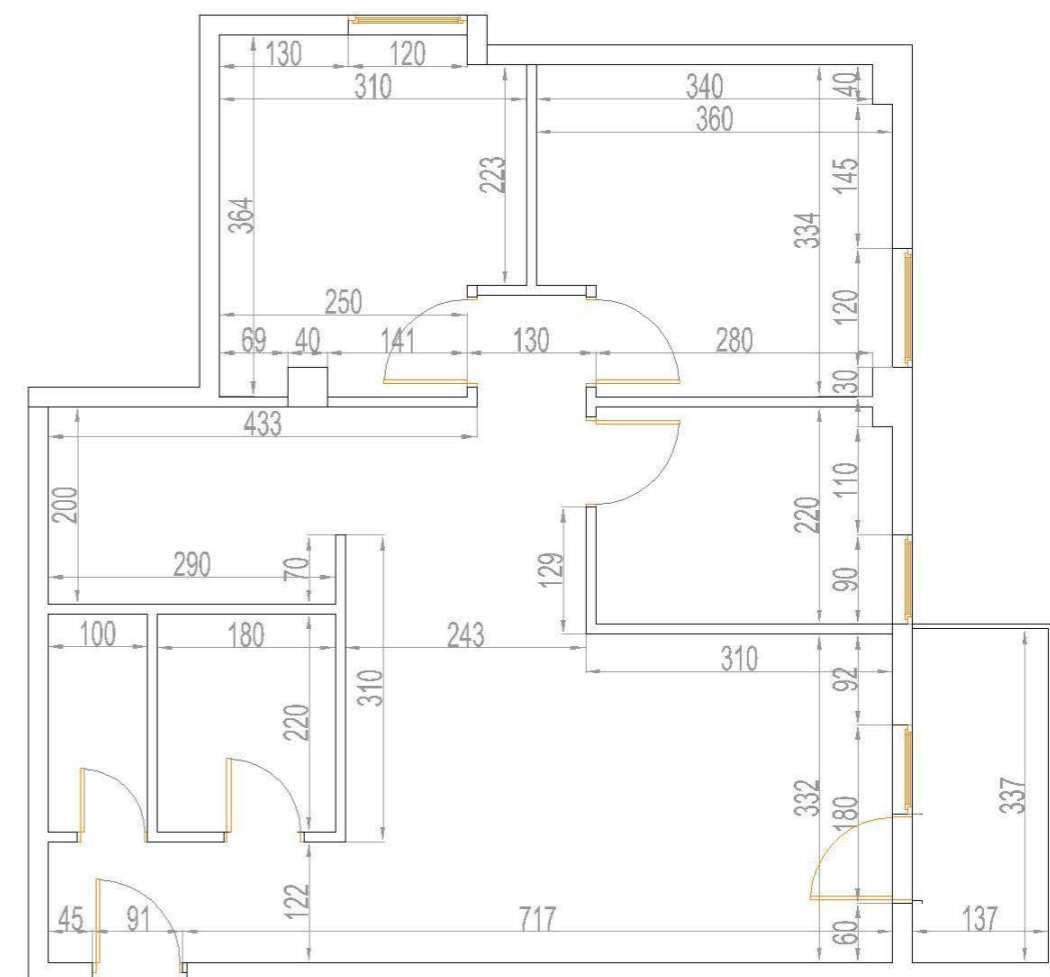
TROIPOSOBAN STAN KOJI SE NALAZI OD I DO VI SPRATA PL 2

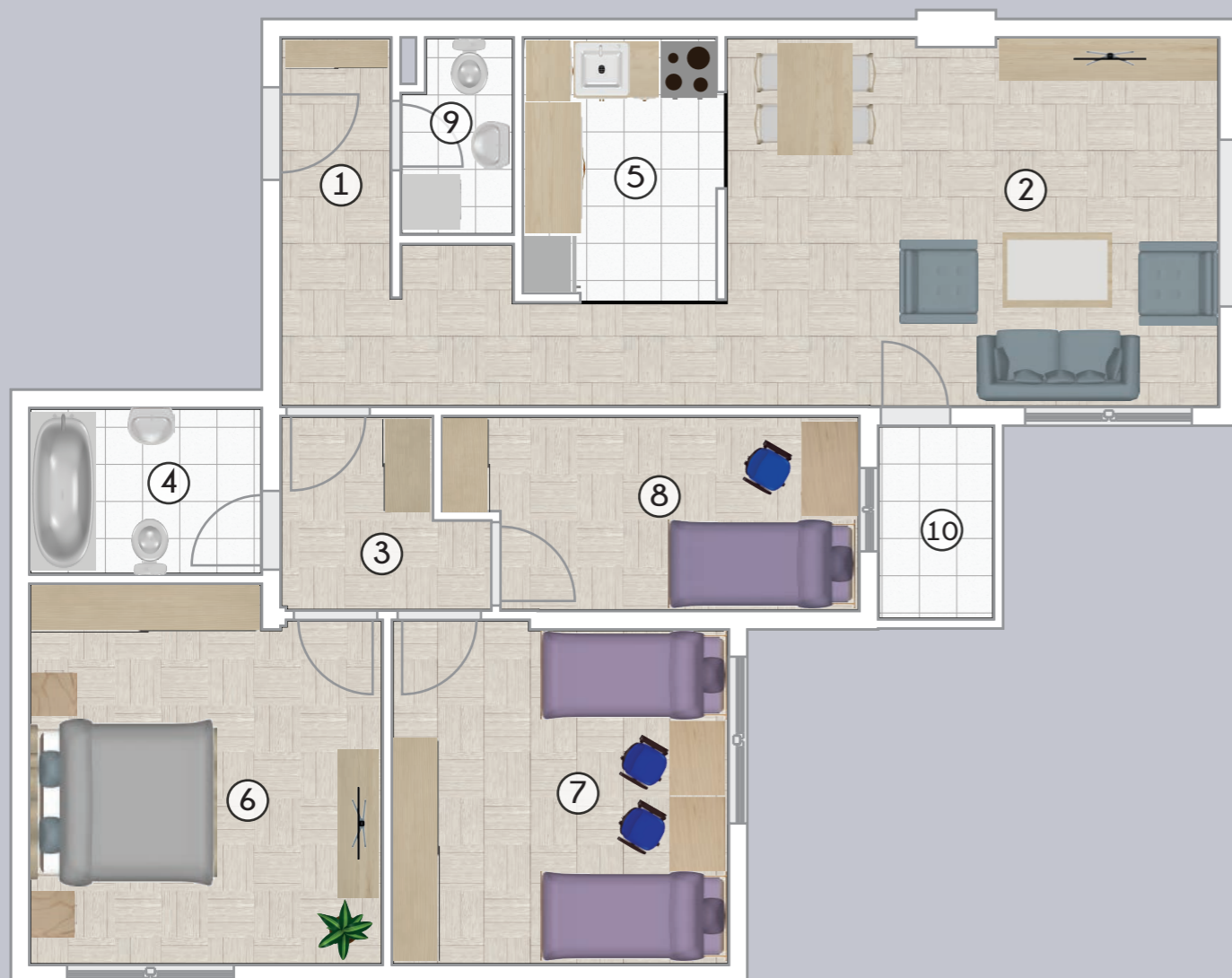


STRUKTURA

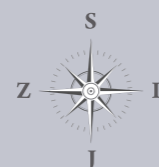
1. Hodnik	4,69 m ²
2. Kombinovana soba	24,96 m ²
3. Kupatio	3,96 m ²
4. Kuhinja	5,61 m ²
5. Soba	10,34 m ²
6. Soba	11,25 m ²
7. Soba	6,60 m ²
8. Toalet	2,02 m ²
9. Terasa	4,25 m ²

UKUPNO: 73,68 m²





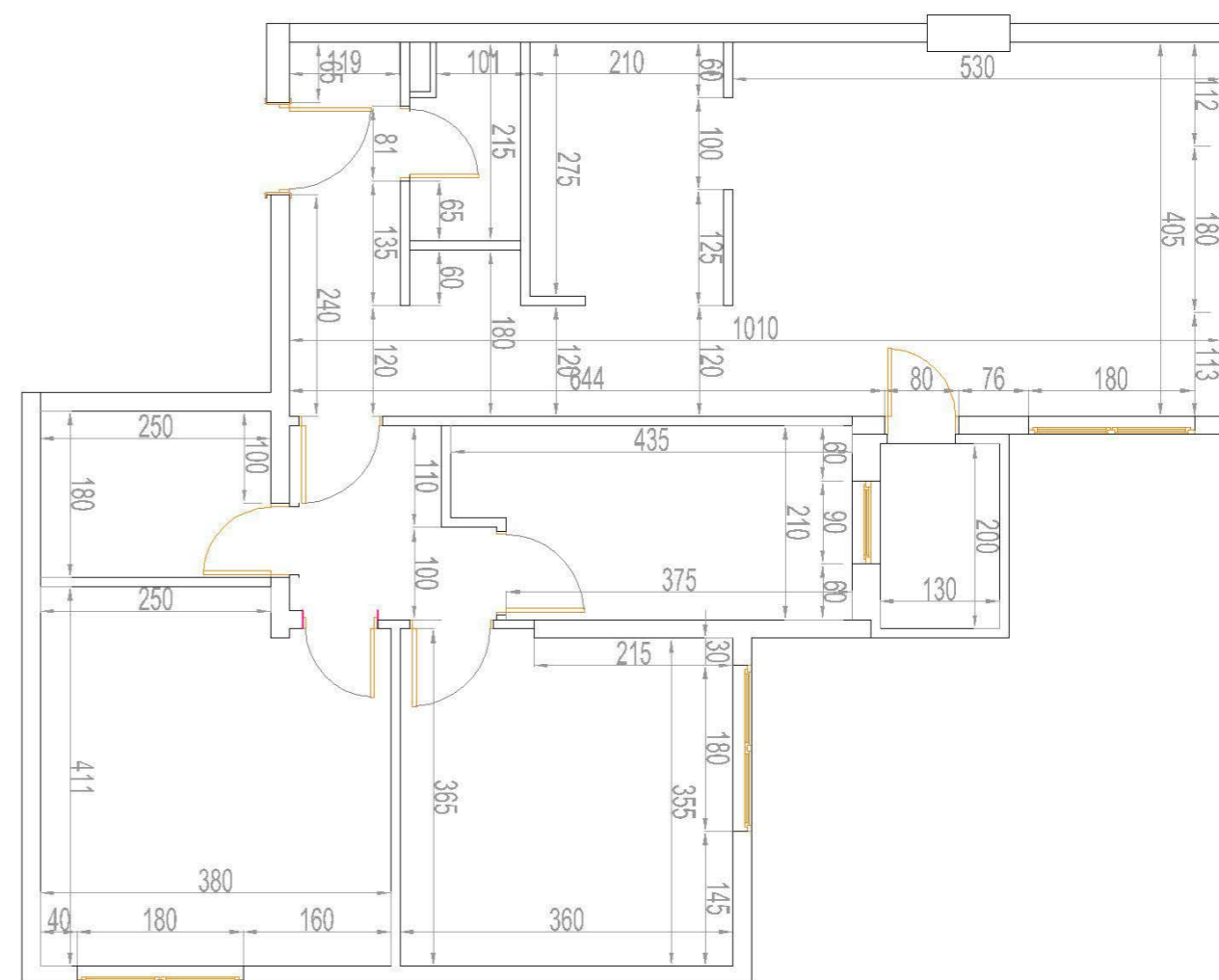
TROIPOSOBAN STAN KOJI SE NALAZI OD I DO V SPRATA PL 3

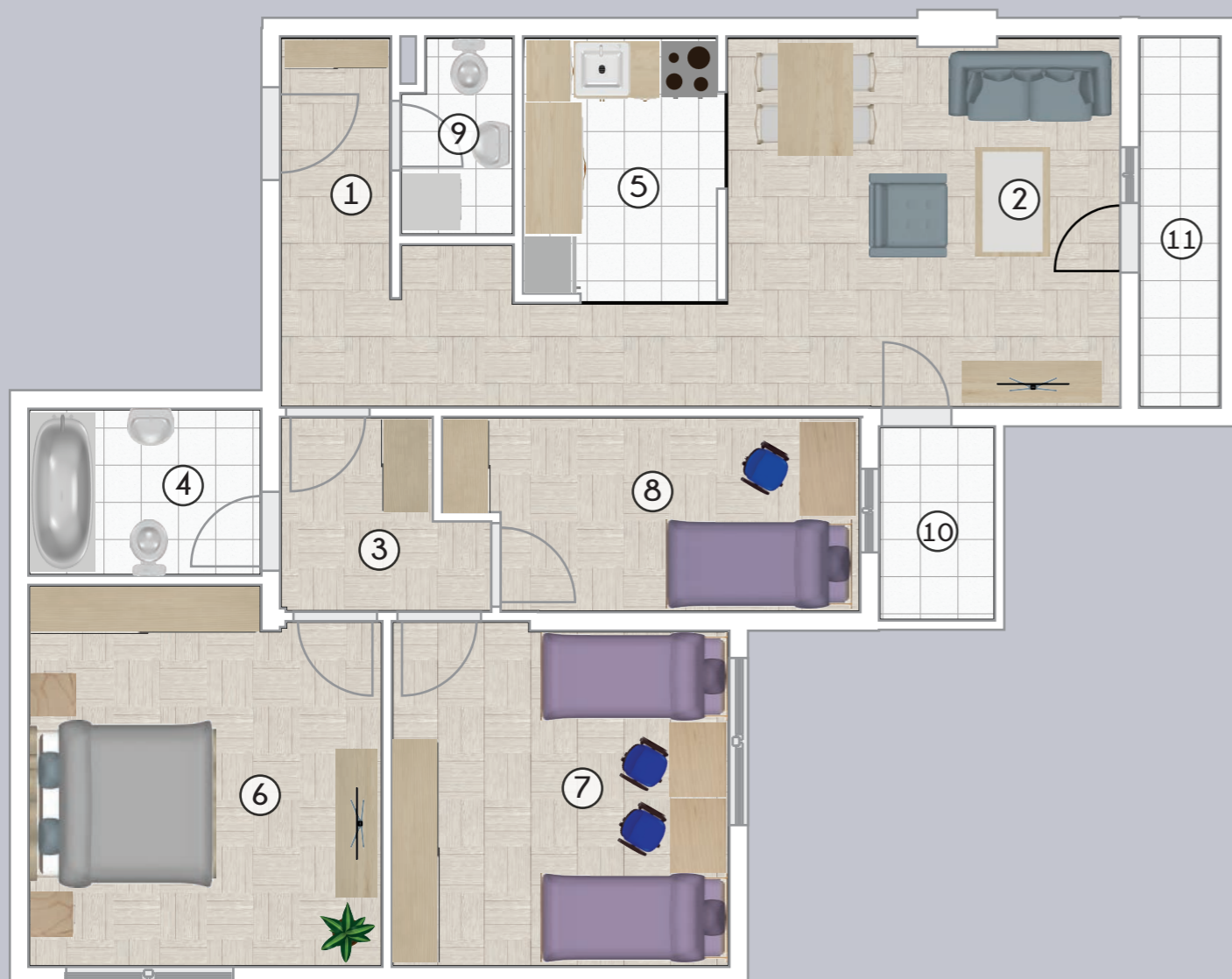


STRUKTURA

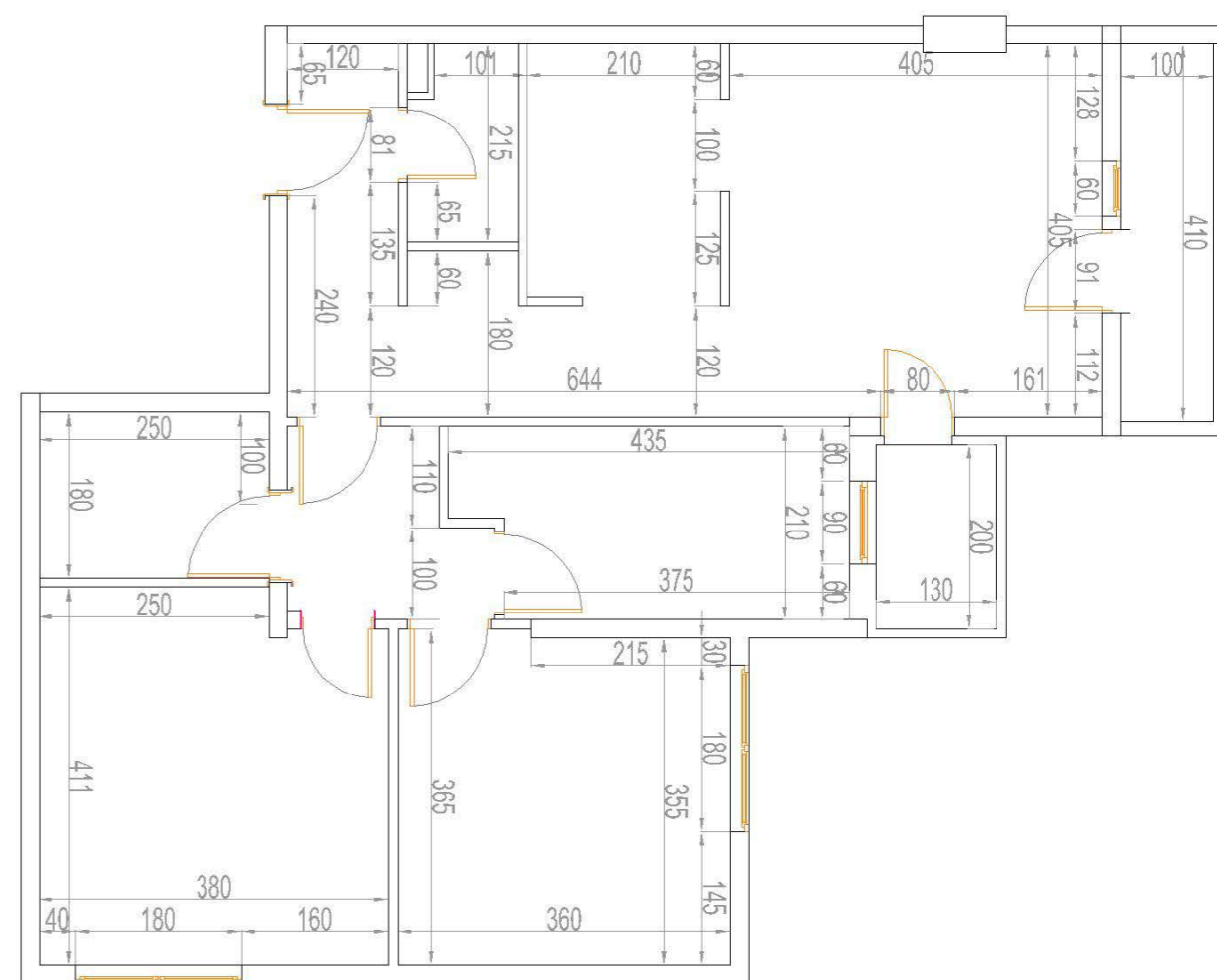
1. Hodnik	8,46 m ²
2. Kombinovana soba	22,85 m ²
3. Degažman	4,07 m ²
4. Kupatio	4,50 m ²
5. Kuhinja	5,81 m ²
6. Soba	14,81 m ²
7. Soba	13,16 m ²
8. Soba	8,50 m ²
9. Toalet	2,41 m ²
10. Terasa	2,90 m ²

UKUPNO: 87,47 m²





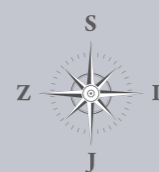
TROIPOSOBAN STAN KOJI SE NALAZI NA VI SPRATU PL 3



STRUKTURA

1. Hodnik	8,35 m ²
2. Kombinovana soba	18,10 m ²
3. Degažman	4,07 m ²
4. Kupatio	4,50 m ²
5. Kuhinja	5,81 m ²
6. Soba	14,81 m ²
7. Soba	13,16 m ²
8. Soba	8,50 m ²
9. Toalet	2,41 m ²
10. Terasa	2,90 m ²
11. Terasa	3,65 m ²

UKUPNO: 86,26 m²





ARAMONT d.o.o.

Vojvode Micka Krstića 1, Office Lamela 9
11000 Beograd, Srbija

Tel/Fax: +381 (0)11 275 08 13

Tel/Fax: +381 (0)11 275 08 14

Tel/Fax: +381 (0)11 275 08 15

Email: prodaja@aramont.com